



JEWISH FEDERATION OF METROPOLITAN DETROIT

# Annual Report

2016-2017  
5776-5777

2016 - 2017 Federation Executive Committee

Lawrence A. Wolfe	President
Beverly Liss	President Elect
Michael Eizelman	Vice-President
Terri Farber	Vice-President
Matt Lester	Vice-President
Joshua F. Opperer	Vice-President
Gary Shiffman	Vice-President
Gary Torgow	Vice-President
Robb Lippitt	Treasurer
Jeff Schlussel	Secretary
Scott Kaufman	Executive Secretary
James Bellinson	At-Large
Lee Hurwitz	At-Large
Lisa Lis	At-Large
Rabbi Harold Loss	At-Large

2016 - 2017 Foundation Executive Committee

Benjamin F. Rosenthal	President
Alan Jay Kaufman	President Elect
Michael Berger	Vice-President
Dennis Bernard	Vice-President
Ralph Gerson	Vice-President
Lawrence Lax	Vice-President
Steven Weisberg	Vice-President
Alan Zekelman	Vice-President
Scott Eisenberg	Treasurer
Scott Kaufman	Secretary
Warren Rose	At-Large
Karen Sosnick Schoenberg	At-Large

# Here to Help


In recent years, the Jewish Federation has made tremendous strides in advancing our mission of building and supporting a vibrant Jewish community. Growing Jewish philanthropy, engaging more Jewish individuals and fostering a powerful sense of Jewish identity are essential for the health and vitality of our community, now and in the future.

We must never forget, however, that we are also responsible for the welfare of those in need, including our seniors, individuals with special needs, families in crisis, the underemployed and other vulnerable members of the community. Even in the best of times, there are those who struggle to lead healthy, secure lives. Working with a remarkable roster of partner agencies throughout the city, Federation is here to help.

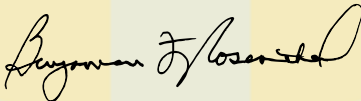
Throughout this report are examples of how Federation works to take care of needs throughout Jewish Detroit, as the central fundraiser, planner and convener of the community. While there is much more to be done, we are deeply proud of what we accomplished.

This important work is only possible through the commitment and generosity of our donors and volunteers, whose passion and commitment fuel our efforts.

On behalf of our community, we are grateful for all you have done.



Lawrence A Wolfe  
President  
Jewish Federation of  
Metropolitan Detroit



Benjamin F. Rosenthal  
President  
United Jewish Foundation  
of Metropolitan Detroit



Scott Kaufman  
Chief Executive Officer  
Jewish Federation of  
Metropolitan Detroit

PROJECTED CAMPAIGN ACHIEVEMENT

2017 Annual Campaign	\$31,800,000
2017 Rose Family Challenge Fund	3,166,640
Shrinkage Allowance	(847,500)
Prior Year’s Overachievement	1,100,000
Total Projected Campaign Achievement	\$35,219,140

ALLOCATIONS

Israel and Overseas

JAFI/JDC/ORT Core Support	\$6,895,130
Elective Programs/Challenge Fund Grants	1,272,000
JFMD Israel and Overseas Services	449,300
Donor Designations	353,800
Total - Israel and Overseas	\$8,970,230

Local Agencies and Programs

JEWISH EDUCATION & IDENTITY

Farber Hebrew Day School	\$478,477
Hillel Day School	665,016
Yeshiva Beth Yehudah	903,012
Yeshiva Gedolah of Greater Detroit	112,068
Yeshivas Darchei Torah	293,504
Congregational School Funding	450,271
BBYO	70,088
Tamarack Camps	493,242
Hillel of Metro Detroit	173,936
MSU Hillel/Michigan Jewish Conference	224,890
HCAM	60,129
U-M Hillel	166,763
Jewish Community Center	1,722,459
JCC Education Department	964,049
Mission Subsidies	110,000

Total – Jewish Education & Identity \$6,887,904

COMMUNITY SERVICES (ADVOCACY & AID TO AT-RISK POPULATIONS)

Hebrew Free Loan	\$153,693
Jewish Community Relations Council/AJC	331,983
Jewish Family Service	2,721,047
Jewish Senior Life	469,203
JVS	1,329,765
Foundation for Our Jewish Elderly	230,439
In-Home Support Services (JSL/JFS)	18,750

Total – Community Services \$5,254,880

ADDITIONAL LOCAL SUPPORT

Community Security Program	\$296,866
Other Direct Services	610,786
Agency Incentive Grants from Super Sunday	4,618
Community Development/Engagement	774,000
Strategic Planning and Partnerships	415,120
Support Services	1,529,746
Agency Support to Cover Rent for Foundation-Owned Facilities	4,000,000
Campaign Expenses	102,068
Capital Needs Fund Grants	2,435,000
Endowment Fund Matching Grants	1,300,000
Designations	996,149

Total - Additional Local Support \$12,464,353

Total – Local Agency/Program

Allocations \$24,607,137

National Agencies/Central Services

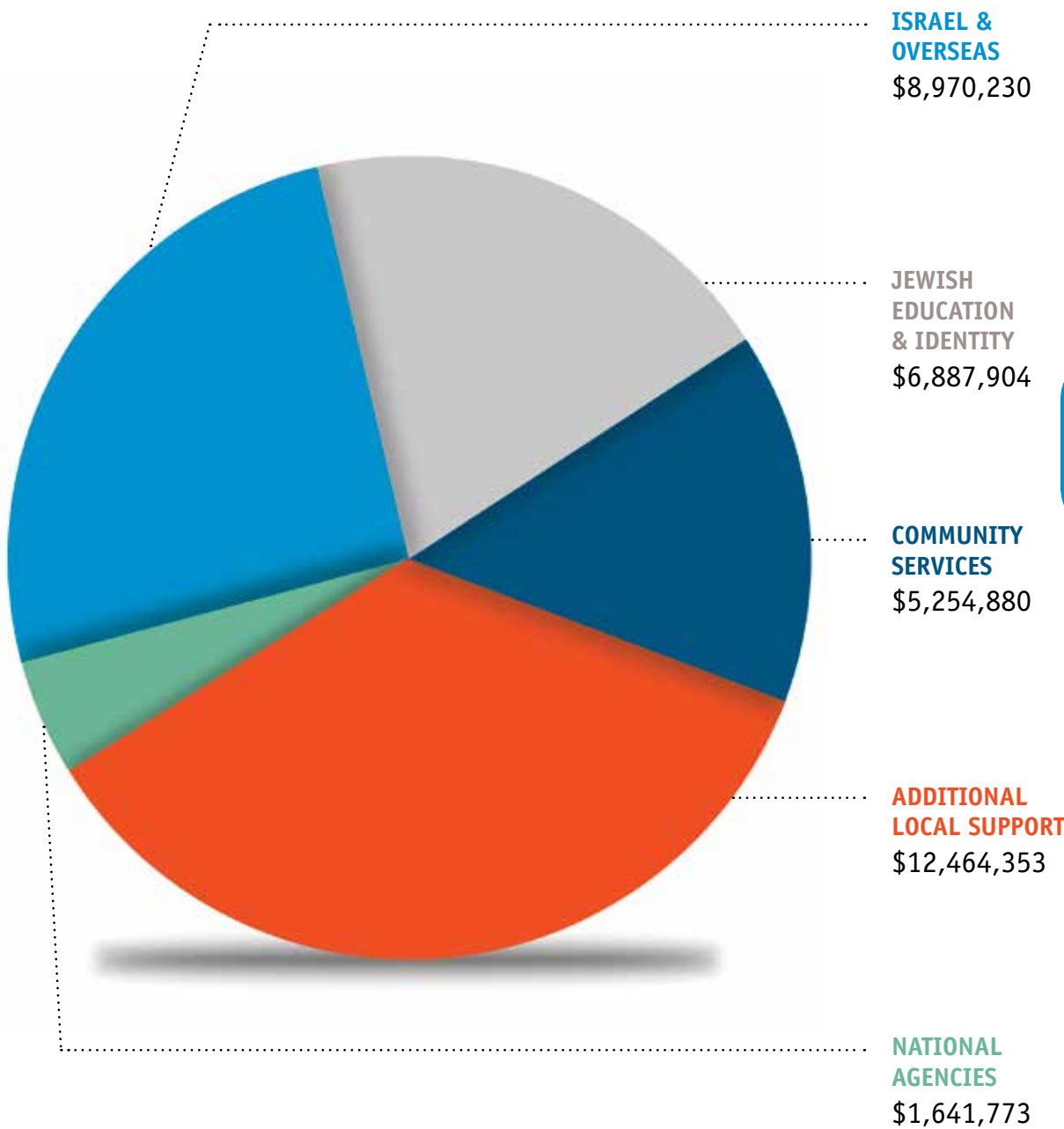
National Federation Agency Alliance	\$221,005
Additional National Agencies	10,875
National Central Services	14,671
JFNA Dues	1,183,432
Birthright Israel	211,790

Total – National Agencies/Central Services \$1,641,773

Total – Local Agencies,

National Agencies and Israel & Overseas Allocations \$35,219,140

# 2017-18 Allocations: Annual Campaign and Rose Family Challenge Fund



Jewish Federation of Metropolitan Detroit  
and United Jewish Foundation of Metropolitan  
Detroit Support of Agencies For The Fiscal  
Year Ended May 31, 2017

5

CAMPAIGN SUPPORT					
	ANNUAL CAMPAIGN	CHALLENGE FUND	RENT SUPPORT	TOTAL- CAMPAIGN	ENDOWMENT INCOME
1. AKIVA HEBREW DAY SCHOOL	\$ 382,828	\$ 103,664	\$ 112,127	\$ 598,619	\$ 236,457
2. BBYO	58,652	11,436	16,802	86,890	13,236
3. FRANKEL JEWISH ACADEMY	-	-	-	-	376,231
4. HEBREW FREE LOAN	127,744	25,949	19,856	173,549	37,904
5. HILLEL DAY SCHOOL	566,320	118,287	-	684,607	473,843
6. HILLEL OF METRO DETROIT	140,709	32,477	-	173,186	15,193
7. HILLEL - MSU/HCAM/MJC	240,938	43,137	46,812	330,887	74,716
8. HILLEL U of M	137,310	35,703	98,671	271,684	119,444
9. JEWISH SENIOR LIFE	390,106	143,597	368,950	902,653	1,485,163
10. JEWISH COMMUNITY CENTER	1,289,314	375,646	1,362,579	3,027,539	1,427,287
11. JEWISH COMMUNITY RELATIONS COUNCIL	277,246	54,737	10,239	342,222	4,852
12. JEWISH FAMILY SERVICES	2,323,453	475,093	144,283	2,942,829	434,400
13. JEWISH VOCATIONAL SERVICES	1,119,989	209,893	333,945	1,663,827	390,210
14. FRESH AIR SOCIETY / TAMARACK CAMPS	409,864	104,198	962,376	1,476,438	284,576
15. YESHIVA BETH YEHUDAH	714,379	162,145	359,529	1,236,053	599,519
16. YESHIVA GEDOLAH	102,210	19,597	-	121,807	53,036
17. YESHIVAS DARCHEI TORAH	209,460	46,687	163,831	419,978	169,824
COMMUNITY-WIDE SECURITY PROGRAM	307,600	-	-	307,600	-
JEWISH FEDERATION DIRECT					
PROGRAM SERVICES	5,917,870	498,399	-	6,416,269	(1,549,189) <sup>[1]</sup>
CAPITAL NEEDS RESERVE	1,200,000	250,000	-	1,450,000	-
OTHER LOCAL AGENCIES	732,705	76,755	-	809,460	
ISRAEL AND OVERSEAS	8,635,530	430,000	-	9,065,530	-
OTHER NATIONAL AGENCIES	1,771,773	50,600	-	1,822,373	
	\$27,056,000	\$3,268,000	\$4,000,000	\$34,324,000	\$4,646,702

[1] Reduction of \$1,549,189 relates to the support of the Millennium Fund matches and the Foundation for our Jewish Elderly included in both campaign support and endowment income.

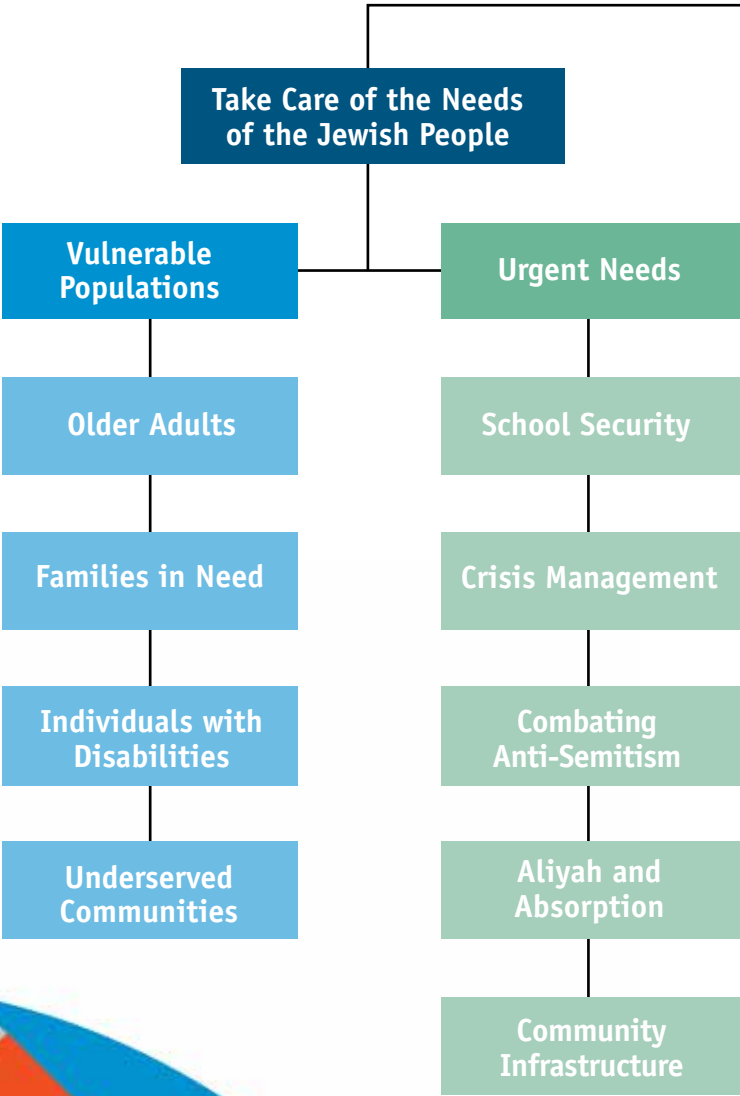
[2] Reduction of \$1,450,000 relates to the capital needs allocations included in both campaign support and capital needs grants.

[3] Other Grants include distributions from the general fund, a one-time grant from the campaign reserve for agency security and outside grants facilitated with the assistance of the JFMD grant writers.

While the Annual Campaign remains central to our fundraising efforts, the Jewish Federation also raises funding from a variety of additional sources. The following represents the support raised and allocated to local and overseas agencies during the past year.

OTHER SUPPORT								
CENTENNIAL INCOME	CAPITAL NEEDS GRANTS	REAL ESTATE CENTRAL-IZATION	MENTAL HEALTH GRANT FROM STATE OF MI	JWF	OTHER GRANTS	DAF GRANTS	TOTAL OTHER SUPPORT	GRAND TOTAL JFMD & UJF SUPPORT
\$ -	\$	\$ 73,629	\$ -	\$ -	\$ 1,000	\$ 39,260	\$ 350,346	\$ 948,965
-			-	-	-	15,750	28,986	115,876
-			-	-	-	52,250	428,481	428,481
74,148			-	-	-	138,551	250,603	424,152
17,800			-	-	1,250	151,312	644,205	1,328,812
-			-	-	-	158,300	173,493	346,679
100,000	56,847	13,398	-	10,000	-	112,600	367,561	698,448
99,660	76,112	46,873	-	10,000	1,000	65,020	418,109	689,793
282,904	66,066		43,277	-	-	233,466	2,110,876	3,013,529
17,156	764,689	132,190	38,139	20,000	222,300	135,130	2,756,891	5,784,430
-			-	-	1,000	6,856	12,708	354,930
584,767	49,092	43,239	857,253	67,000	55,600	149,630	2,240,981	5,183,810
-	90,503	40,031	1,027,550	7,800	7,000	31,482	1,594,576	3,258,403
52,620	810,200	111,316	-	20,000	-	262,385	1,541,097	3,017,535
45,302			-	-	-	90,416	735,237	1,971,290
-		679	-	-	-	-	53,715	175,522
-		733	-	-	100	24,425	195,082	615,060
-			-	-	80,000		80,000	387,600
-	874,574		-	-			(674,615)	5,741,654
-	(1,450,000) <sup>[2]</sup>		-	-			(1,450,000)	-
-			-	-			-	809,460
-			-	-			-	9,065,530
-			-	-			-	1,822,373
\$1,274,357	\$1,338,083	\$462,088	\$1,966,219	\$134,800	\$369,250 <sup>[3]</sup>	\$1,666,833	\$11,858,332	\$46,182,332

# In Detroit, Israel and Around the World





# Here For Good

## Build a Vibrant Jewish Future

### Jewish Identity

Adult Jewish  
Learning

Jewish Schools  
Day & Religious

Early Childhood

Special Needs  
Education

Hillel/Campus

Camp

### Jewish Community

Teen

Families

NEXTGen

Women's  
Philanthropy

Affinities

Missions

Partnership2GETHER

### Philanthropy

Annual  
Campaign

Challenge  
Fund

Endowment/  
Centennial

Philanthropic  
Funds

Community  
Partnership Support

Planning &  
Allocations

# Taking Care of Those in Need

The Jewish Federation of Metropolitan Detroit is the cornerstone of our Jewish community. We are committed to taking care of the needs of the Jewish people and building a vibrant Jewish future in Detroit, in Israel and around the world.

Providing for the well-being of the most vulnerable members of our community is a core value of our Jewish heritage and one of the fundamental aspects of Federation’s mission to serve the Jewish community. The range of services offered through our family of partner agencies is extensive. They include senior case management and residential housing for our Jewish elders; psychological counseling for individuals and families; Holocaust Survivor assistance; emergency financial assistance and free loans, transportation, vocational counseling and training; healthcare access and assistance for individuals with special needs.

Federation also stands ready to respond to disasters and urgent needs as they emerge. We are here to ensure the security and stability of our community, as well as to take care of those whose lives are affected in times of crisis, whether it means securing emergency resources, coordination of services or direct response to critical issues.





# Building a Vibrant Jewish Future

In addition to taking care of those in need, we also strive to ensure a strong and vibrant Jewish future for our entire community. This encompasses the work of strengthening Jewish identity through all ages and stages of life—Jewish pre-schools, summer camps, congregational schools, adult education courses and more. It also means building and sustaining Jewish community here in Detroit, in Israel and throughout the world. Federation is the community leader in Jewish engagement and, in particular, has led a revitalization of young adult engagement in the Detroit area. Finally, we remain focused on growing Jewish philanthropy through our Annual Campaign, Centennial Fund and a variety of other sources of support that help us secure our long-term future.





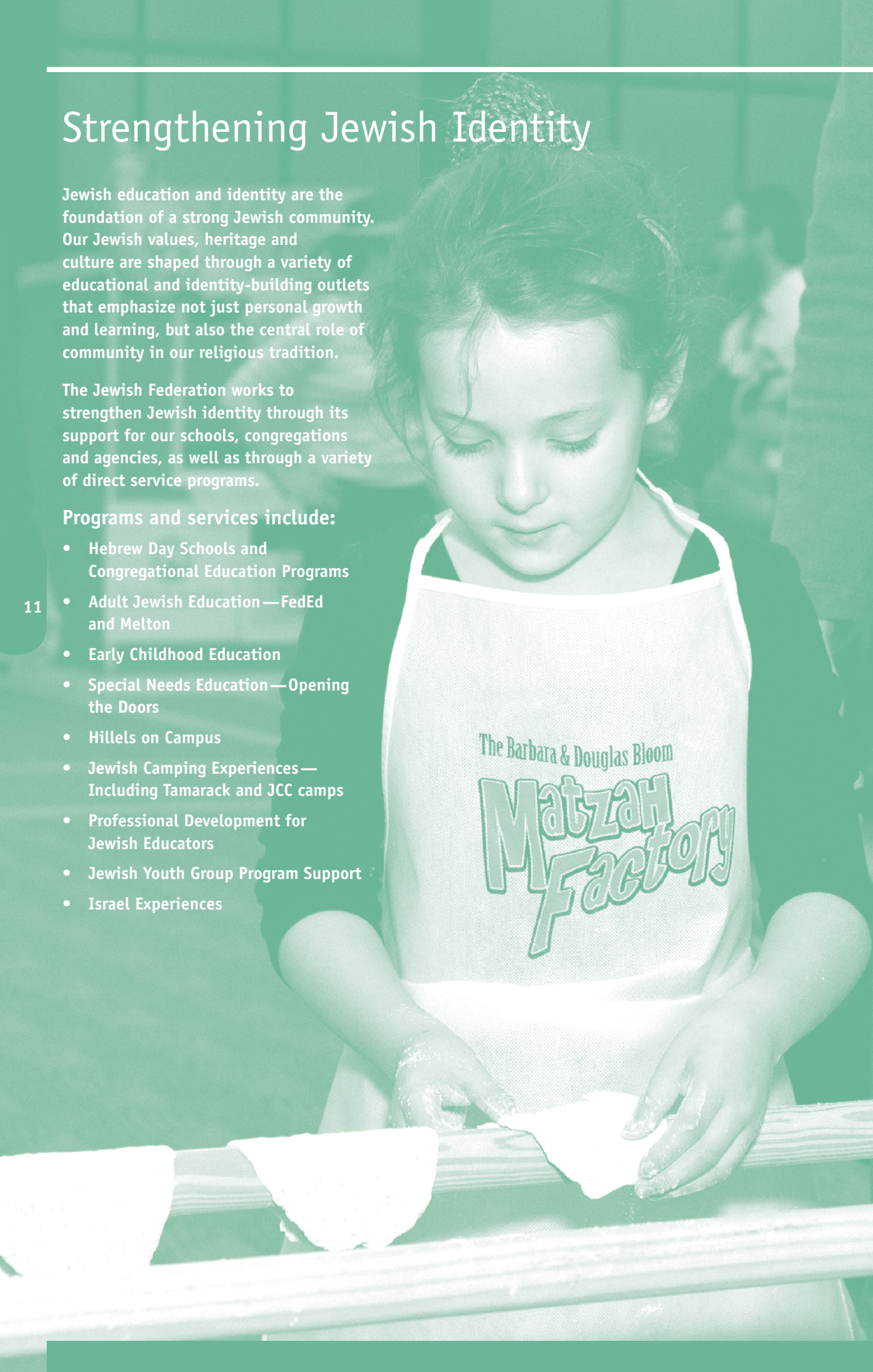
# Strengthening Jewish Identity

Jewish education and identity are the foundation of a strong Jewish community. Our Jewish values, heritage and culture are shaped through a variety of educational and identity-building outlets that emphasize not just personal growth and learning, but also the central role of community in our religious tradition.

The Jewish Federation works to strengthen Jewish identity through its support for our schools, congregations and agencies, as well as through a variety of direct service programs.

## Programs and services include:

- Hebrew Day Schools and Congregational Education Programs
- Adult Jewish Education — FedEd and Melton
- Early Childhood Education
- Special Needs Education — Opening the Doors
- Hillels on Campus
- Jewish Camping Experiences — Including Tamarack and JCC camps
- Professional Development for Jewish Educators
- Jewish Youth Group Program Support
- Israel Experiences





# Mifgash

NEXTGen Detroit’s Community Birthright Trips are packed with extras that don’t come standard on the average Birthright experience—the most extraordinary being the Mifgash Reunion.

Thanks to our 20+ year relationship with our Partnership2Gether Region in Central Galilee, Federation brings together young adults from Metro Detroit and the municipalities of Migdal HaEmek, Nazareth Illit and Jezreel Valley for 10 days of adventure, learning and friendship in Israel. But the Birthright trip is only the beginning. Every August, we welcome the Israelis who traveled with us on our multiple Birthright trips that year to Metro Detroit for a week-long Mifgash Reunion. Israelis and Detroiters explore everything that Jewish Detroit has to offer while building on the relationships they made in Israel.





# Hope Against Hate

“Hope Against Hate” was a unique one-day conference, movie screening and presentation that examined the existential challenges—and potential solutions—facing Jewish communities today, from Eastern Europe to metro Detroit and beyond. Co-sponsored by the American Jewish Joint Distribution Committee (JDC) and the Jewish Federation of Metropolitan Detroit, the event featured Dr. Deborah E. Lipstadt, author of the acclaimed book *Denial: Holocaust History on Trial*, which was the basis for the film *Denial*, along with Alan H. Gill, the JDC’s Executive Vice President Emeritus.



# Community Security Program

Security has become a growing concern, particularly within the Jewish community. According to the Anti-Defamation League (ADL), the number of incidents in the U.S. has risen dramatically in recent years. Jewish institutions generally are targeted more frequently for hate crimes than any other group.

The Jewish Federation of Metropolitan Detroit started its community security program in 2006, creating a presence at the Jewish community campuses in West Bloomfield and Oak Park. The Federation adopted a 3-point plan which increased training and communication about security for children, faculty and parents at all Jewish days schools; approved a series of grants to pay for equipment and technology; and hired and deployed armed security officers at each of the day schools and at Tamarack Camps. Since its inception, this plan has resulted in a significant cultural shift with community agencies, bringing assistance with security awareness training, emergency drills and providing an extra layer of protection.



# Building Jewish Community

Supporting and strengthening Jewish community remain at the core of Federation’s work. This encompasses both our local community in metro Detroit, now over 100 years old and still one of the most vibrant to be found anywhere, as well as our broader Jewish community across the nation, in Israel and throughout the world.

## Federation’s Community-Building Programs Include:

- **NEXTGen Detroit:** Serving as the hub of a vibrant and dynamic Jewish community for young adults in Metro Detroit, NEXTGen Detroit is the connector for all things young and Jewish.
- **Women’s Philanthropy:** For 70 years, Women’s Philanthropy has empowered women of all ages through education, volunteerism and fundraising efforts.
- **Affinities:** Custom programming to engage unique demographics and groups within the Detroit Jewish community, such as physicians and interfaith couples.
- **Leadership Development:** Dynamic training and educational programs to create and sustain a cadre of community leaders to meet the challenges of today and tomorrow.





# Women's Philanthropy Signature Event

Women's Philanthropy hosted its Signature Event, featuring Jill Kargman, author, actress and star of Bravo's hit show *Odd Mom Out*. The event was a shining example of community-building, Jewish engagement and philanthropy coming together to create an unforgettable experience that brought 500 women together and raised over \$600,000. The Signature Event demonstrated the power of Women's Philanthropy, a dynamic and longstanding leader in Federation's campaign and engagement efforts.



# Maimonides Society

Offering lectures and social events along with insights into the work of Federation, the Maimonides Society connects and engages physicians to Jewish life and philanthropy. The group has gone through a recent resurgence with a host of new opportunities including the Forman Group, a unique and in-depth experience led by longtime Federation leader Dr. Jeffrey Forman.



# Securing Our Future

This was another extraordinary year for Federation’s Centennial Fund. To date, there have been 127 committments totalling \$197 million to support the long-term health and security of our community.

The Centennial Fund is the primary endowment fund for securing our community’s future and will provide for the welfare and continuity of Jewish life in Detroit for the next 100 years.

With a goal of \$250 million, this fund will enable us to provide for our fellow Jews in Detroit, in Israel and throughout the world. It will impact the full range of Jewish needs and experiences, including social welfare, Jewish identity and education and Jewish life around the world.

Thanks to the support of our generous donors, we have made extraordinary strides and are on-track to reach and surpass this ambitious and important goal.



Lawrence and Andrea Wolfe



Kari and Nick Coburn



**Affinities**

The Jewish Federation Affinities Department creates meaningful touch points for like-minded groups through creative programming for under-engaged community members. This engagement leads to an increased or deeper connection to the community and commitment to Jewish philanthropy.

**Farber (Akiva) Hebrew Day School**

We provide a Judaic Studies and college preparatory program in a Modern Orthodox, Zionist environment that nurtures personal and intellectual growth, social and moral responsibility and a strong sense of self for each student.

**American Jewish Joint Distribution Committee**

We are the world’s leading Jewish humanitarian assistance organization, working in more than 70 countries and Israel to rescue Jews at risk, to bring relief to Jews in dire need and to renew Jewish community life in areas where it has not been allowed to flourish.

**Birthright Israel-Taglit**

We seek to increase the annual number of Jews visiting Israel by providing the gift of first-time educational trips to the Holy Land for thousands of mostly unaffiliated Jewish young adults.

**BBYO**

We shape our community’s next generation of leaders by positively impacting the lives of Jewish teens in Metro Detroit, providing them with meaningful Judaic, social justice and leadership development programming.

**Jewish Education**

We ensure that the local community receives the highest quality Jewish education and identity building services by creating, planning and convening programs and engaging the community and its leadership. The community also offers scholarships to ensure that children who need assistance have access to Jewish education through congregational and/or afternoon Jewish school programs.

**Frankel Jewish Academy**

We immerse our students in high-caliber academics and Jewish thought and help them develop a passion for arts and athletics. Our graduates move into the world as literate Jews, educated young adults and committed Zionists.

**Hebrew Free Loan**

We provide Jewish community members with interest-free business, educational and personal loans that help them establish businesses, afford college, cover medical and dental expenses, adopt children, celebrate weddings and handle emergency situations.

**Hillel Campus Alliance of Michigan**

We provide meaningful Jewish experiences and connection for students on nine college campuses throughout the state of Michigan, under the auspices of MSU Hillel.

**Hillel Day School**

We inspire a passion for learning, responsibility and community — and devotion to Jewish living — in a warm and engaging environment for all Jewish families wishing to provide their children with an outstanding Jewish and general education.

**Hillel of Metro Detroit**

We provide students on college campuses in and around Detroit with inspired Jewish programming that creates memorable experiences and helps them build their individual Jewish identities.

**Hillel at the University of Michigan**

We provide important Judaic programming and help create the next generation of American Jewish leaders through Jewish programming and facilitation of student groups representing a diverse spectrum of approaches to Jewish life.



### **Israel & Overseas Programs**

We build our local community connection to Israel, fund and help implement overseas designated projects and participate in the collective support for world Jewry.

### **Jewish Agency for Israel**

We ensure the future of a connected, committed global Jewish people with a strong Israel at its center by rescuing and resettling new immigrants, connecting the global Jewish family to Israel, social activism and strengthening Jewish identity among young Israelis.

### **Jewish Community Center**

We build and strengthen Metro Detroit's entire community by providing programs that enhance Jewish continuity and identity in such areas as health, recreation, education, cultural arts and camping.

### **Jewish Community Relations Council/AJC**

We tell Israel's and the Jewish community's stories through the news media, educating and mobilizing our community's activists and building important relationships with our non-Jewish neighbors.

### **Jewish Family Service**

We provide services for those most in need, helping uninsured adults receive comprehensive healthcare, families avoid foreclosure, older adults age with dignity and households meet needs as basic as food and shelter.

### **Jewish Senior Life**

We are dedicated to enhancing the quality of life for the older Jewish adults in our community through programs and services that support aging with dignity, choice and independence.

### **JVS**

We help those with and without disabilities meet life challenges affecting their self-sufficiency through counseling, training and support services in accordance with the Jewish values of equal opportunity compassion and responsibility.

### **Michigan State University Hillel**

We continue to build dynamic Jewish life on the MSU campus and develop the next generation of Jewish leaders with Judaism-inspired programs, initiatives and activities that create memorable experiences.

### **NEXTGen Detroit**

We are Federation's platform to attract, engage and retain the next generation of Jewish Detroiters and are continuing to develop a new model to transform our community to make it a meaningful home for young Jews of every age and affiliation.

### **Tamarack Camps**

We build a vibrant community by providing enriching Jewish camping experiences for children and families, respectful of financial ability.

### **World ORT**

We are dedicated to the advancement of Jewish and other people all over the world and provide training and education so that communities learn to be self-sufficient through the use of state-of-the-art technology.

### **Women's Philanthropy**

Women's Philanthropy connects women through volunteerism, engagement and philanthropy, and empowers them to meet the needs of the Jewish community and build a vibrant Jewish future in Detroit, in Israel and around the world. Women's Philanthropy's dynamic programming creates leaders, addresses needs and ensures a stronger tomorrow.

### **Yeshiva Beth Yehudah**

We create future community and Jewish leaders by teaching our students love of Torah, love of Eretz Yisrael and a deep appreciation for the values of a Torah way of life.

### **Yeshivas Darchei Torah**

We provide an exceptional Jewish and secular education for students while also teaching our children how to care for the public through a variety of programs and initiatives that focus on giving back to their community.

### **Yeshiva Gedolah of Greater Detroit**

We educate the next generation of Jewish leaders in our community through a strong curriculum steeped in Jewish learning and tradition.

THANK YOU TO OUR CORPORATE SPONSORS

\$25,000 +

Burns &  
Wilcox

\$10,000 - \$24,999



\$1,000 - \$9,999

21



Associated Dermatologists  
of West Bloomfield & Commerce





▲ FINANCIAL GROUP



————— *Paul D. Koh* —————  
**QUALITY KOSHER**  
catering



**CLARK HILL**  
Legal and Professional Services



**kaufman**  
Children's Center  
for speech, language, sensory-motor, & social connections inc.



**THE MARS AGENCY®**

**MILFORD SINGER  
& COMPANY**



*Temple Israel*  
Making a difference.





# Jewish Federation

OF METROPOLITAN DETROIT

6735 Telegraph Road  
Bloomfield Hills, MI 48301-3143  
[jewishdetroit.org](http://jewishdetroit.org)