



connections

Jewish Federation and United Jewish Foundation of Metropolitan Detroit  
Annual Report to the Community 2007-08 / 5767-68

Our aim is to emphasize and highlight the great work of this community through stories and pictures. By showcasing the faces of our community – from our grandparents to our grandchildren – we demonstrate the hopes and dreams of our work together. In doing so, many of the traditional listings of committees and donor funds have not been included in this year's Annual Report. A listing of the scores of donor supporters and dedicated volunteers will be detailed in future Federation publications. We thank you for reading this year's Annual Report and for helping to enrich our Jewish community.

This report is available in its entirety on-line at [jewishdetroit.org](http://jewishdetroit.org)

Special thanks to these photographers for photography used in this Annual Report:

Brett Mountain

Larry Peplin

Vivian Henoch

and thanks to United Jewish Communities

for the use of photos by Jonathan Levine and Lloyd Wolf. ©2006 ©2007 ©2008 UJC



Jewish Federation and United Jewish Foundation  
of Metropolitan Detroit

6735 Telegraph Road  
P.O. Box 2030  
Bloomfield Hills, MI 48303-2030  
(248) 642-4260  
[jewishdetroit.org](http://jewishdetroit.org)



# message to the community

In a world filled with crisis,  
In a state filled with economic hardship,  
Is a community filled with hope.

For over a century, our Detroit Jewish community has taken great pride in its generous spirit of *Tikkun Olam*. We have given our support to ease suffering and help those most vulnerable, both locally and around the world, and to ensure that those in need continue to be connected and helped by our community.

We have always had a close connection to our family in Israel and shown unwavering support for our Jewish homeland.

We look at our Campaign achievement this past year with awe — how could the Jewish Federation of Metropolitan Detroit raise \$42.2 million in six months for urgent needs during one of the most challenging economic climates in our history?

We raised \$8.2 million for the Rebecca and Gary Sakwa Challenge Fund to provide emergency financial assistance for the dramatically increased number of families who find themselves in crisis. Federation met and collaborated with its partner agencies in order to most efficiently direct the funds.

But this accomplishment was born of necessity. More families than ever before in our Jewish community faced job losses, foreclosures and bankruptcies. Our 19 partner agencies were

overwhelmed by the rapidly increasing number of people in need.

And our community responded.

When some Jewish community members were dangerously close to foreclosing on their home mortgages, an anonymous donor stepped in to provide relief. With Federation's help to provide the structure, the Jewish Housing Assistance Fund was created.

Hours after a fire swept through the Lillian and Samuel Hechtman II Jewish Apartments and displaced 93 elderly residents, the Jewish community came together. Federation and many of its 19 partner agencies coalesced to provide immediate assistance. By the end of that day, all of those affected had been relocated, and a relief fund was formed for those who wished to contribute.

We have faced each new challenge with determination and strength.

This is Federation's greater purpose: to mobilize the community, especially in times of greatest need, and to give a voice to those most vulnerable — those whose voices would not otherwise be heard.

And while we look back on a year of challenges met, we must also look forward.

The present economic crisis has implications throughout our system, and every segment of our community needs help. Our population is shrinking and our community is aging. We are struggling to find a way to keep our young adults from moving away.

Our local needs are increasing, but we must also remain committed to our family overseas. Our mission is to the Jewish people worldwide, not just those in our community.

We cannot afford to let down our guard. We need to stay focused and connected. We need to give people hope.

This Jewish community has persevered through other challenging times in our history, and we will overcome the challenging times facing us now.

This community has accomplished much, and we will accomplish more.

This is a community filled with hope.



NANCY GROSFELD  
President

Jewish Federation of Metropolitan Detroit



ROBERT P. ARONSON  
Chief Executive Officer  
Jewish Federation of Metropolitan Detroit



NORMAN A. PAPPAS  
President  
United Jewish Foundation of Metropolitan Detroit

"We are all trustees of our Jewish Heritage... with an obligation to cherish it, improve it and guard its future."

MAX M. FISHER



connections

community



It's all about making the **connection**. During these challenging times, our Detroit Jewish community came together to help those less fortunate locally and around the world by giving generously.

When Federation took the unprecedented step to finish our 2008 fundraising drive by April 1 so we could fast track urgent funding to programs that help those in need, our community quickly responded and we reached our goal of \$34 million for the Annual Campaign, and \$8.2 million for the Rebecca and Gary Sakwa Challenge Fund.

But numbers only tell part of the story.

Whether it is the creation of a new endowment fund or a \$50 donation collected during Super Sunday, we are – and always will be – connected by the spirit of *Tikkun Olam*.

Whether it's the Women's Mosaic Mission carrying 39 women to Israel, or a Young Adult Division exchange program in Kiev, we are connected in purpose – both educating and engaging our community.

Whether the dollars raised are allocated to a program that helps a local family struggling to make ends meet, or helps an at-risk elementary school child in Israel, the connection is the same – we have been and always will be there to help our worldwide Jewish community.

The dollars allocated by the Federation to safeguard and strengthen our Jewish community here and around the world were contributed to the Annual Campaign and permanent endowment funds by donors from all segments of the community.

The Women's Department raised \$6.8 million, representing 16 percent of the Annual Campaign.

The Young Adult Division raised over \$1 million for the first time in its history.

Federation's Government Relations Oversight Committee brought \$1.14 million to Detroit Jewish agencies from the State of Michigan's Multi-Cultural grant.

On Super Sunday, over 260 volunteers raised nearly \$500,000 by making calls and delivering a message of hope.

The Jewish Federation and United Jewish Foundation provided oversight of more than \$560 million in total assets. Of that, approximately \$400 million was held in the Jewish Community Endowment Fund that contains 1,600 separate restricted funds.

The Perpetual Annual Campaign Endowment (PACE) is comprised of 290 funds, allowing Federation to distribute over \$4.4 million to the Annual Campaign.

PACE saw a tremendous increase in 2008, due in large part to a \$15 million gift from the estate of a generous community family.

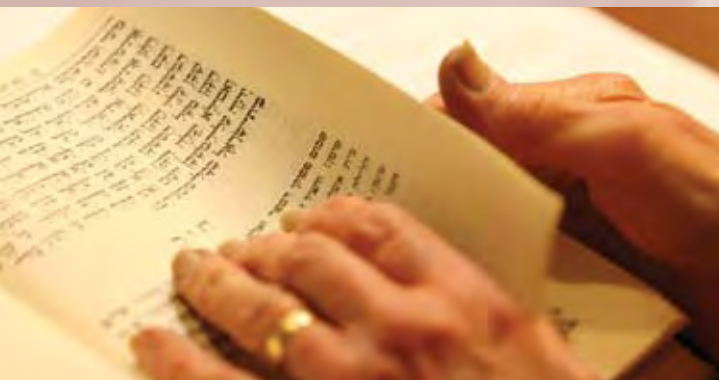
The Detroit Legacy Initiative benefited from 11 new testamentary gifts valued at over \$5 million, bringing total commitments to over \$41.4 million.





connections

education



Federation placed a continuing high value on **education** – for old and young, in formal and informal ways, through classroom study and on the road – as a way to keep our Jewish community connected and educate our future leaders.

With a team of 18 special education teachers in 22 partnership schools, **Federation's Alliance for Jewish Education's** "Opening the Doors Program" helped almost 800 students with learning disabilities.

**Shalom Street's** exhibit, "Every Picture Tells a Story: Teaching Tolerance through Children's Literature," brought over 2,500 school children to the museum from day, congregational and public schools.

Detroit's **Florence Melton Adult Mini-School for Adult Education**, the largest mini-school in the world, graduated 82 students.

Over 100 teachers completed the **NIRIM** teacher educator program, enhancing their professional skills.

Last year the **Jean and Samuel Frankel Jewish Academy of Metropolitan Detroit** celebrated its eighth academic year.

Representing a range of religious backgrounds, 223 students attended the school last year, and 50 students graduated in June, bringing the alumni total to over 210.

The **Jewish Home & Aging Services** "Dor L' Dor – One Voice" intergenerational program with **Hillel Day School** students at Fleischman Residence/Blumberg Plaza emphasized the importance of community service to a younger generation.

2007 marked **Yeshivas Darchei Torah's** first full year within the Edward and Gloria Meer Boys Building and the Hyman and Sonia Blumenstein gymnasium. Special education services were expanded and collaborative work with JARC's Day School Inclusion Program was increased to serve more students.

Hundreds of **Yeshiva Beth Yehuda** volunteers built strong connections with hundreds of members of the broader Detroit Jewish community to study together each week, one on one, in the "Partners in Torah" program.

**Yeshiva Gedolah** is completing construction of the Meer Family Beis Medrash/Study Hall, and renovating its gymnasium.

**Akiva Hebrew Day School** students were recognized internationally for their achievements at the International Bible contest in Jerusalem, where two students placed in the top 10.

Akiva has increased enrollment by 30 percent since it relocated to the former Beth Achim Synagogue in 1999.





connections

Israel





No matter the community, the message is the same—we are all connected by our Jewishness, and what affects a family in **Israel**, or anywhere else in the world, affects us too.

Thirty-nine women traveled to Israel on Jan. 27 during the Women's Department **Mosaic Mission to Israel**, making a commitment to Federation both as donors and solicitors, and returned as advocates for local, Israel and overseas services.

Over 2,500 young people from 15 area congregations celebrated Israel at "**Israel's 60... I'm Not... Let's Party**," on May 4, in a rainbow of colors and *ruach* at the Jewish Community Center. Children marched off 42 buses wearing multi-colored Israel-Sixty t-shirts to attend two separate age-appropriate concerts.

In partnership with Torah Mitzion, the **Young Israel Council of Metropolitan Detroit**, and other local organizations, the Federation sponsored a moving Yom Hazikaron ceremony at Congregation Shaarey Zedek on May 6. A crowd of over 800 paid their respects to those soldiers who perished while fighting for Israel.

Approximately 1,900 community members celebrated Yom Ha'atzmaut, and Israel's 60th Anniversary at a concert featuring Israeli superstar Noa, with the Detroit Symphony Orchestra on May 7, at the Max. M. Fisher Music Center in Detroit.

On May 28, 19 participants in the **Grosfeld VII Leadership Program and Mission** left for an overseas experience that would both expose them to the worldwide Jewish community and give each of them a personal connection to Israel and our Detroit Jewish community.

The **Israel and Overseas Services Department** helped send 333 people to Israel in nine missions and exchanges, including **Class of a Million**.

The **Israeli Camper program** brought 80 young people from Israel to Camp Tamarack. 40 host families, many of them recent Mission participants, welcomed the campers into their homes following the end of camp.

**Oakland University and the Max Stern Academic College of Emek Jezreel** in the Partnership 2000 region signed formal documents in Israel, including agreements on student and faculty exchanges and research projects during a Federation-cosponsored trip. Oakland University has opened a Judaic Studies program on its Rochester Hills campus.





connections



women's department





Enabling women to link Jewish family life and communal life, and strengthening Jewish identity are key goals in **Federation's Women's Department**, which offers a vast spectrum of fundraising and educational programming throughout the year.

Through **Federation's Women's Department**, women in our community raised nearly \$7 million of the \$42.2 million Campaign total for this year. Women made gifts in their own names and many chose to endow their gifts, leaving a legacy for future generations.

#### Highlights of the Year:

**Women's Mosaic Mission to Israel:** 39 women traveled to Israel, making a three-year commitment to Campaign both as donors and solicitors, and returned as advocates for local, Israel and overseas needs.

Fundraising efforts included the **Ruby-Lion of Judah** event for donors of \$5,000 and over, featuring author Julie Salamon, and the new Woman2Woman event for donors of \$365 and over, featuring author Abigail Pogrebin.

The **Passover Program**, featuring educator Ron Wolfson, brought together women from across the spectrum in the

community who learned how to enhance and update their Passover seders. It provided an opportunity for attendees to taste innovative holiday foods from area kosher caterers, share seder table decoration ideas from area congregation Sisterhoods, sample kosher for Passover wines and spend time with one another.

**Food for Thought** luncheons appealed to diverse groups of women in the community and featured experts on timely topics, including prescription drug safety and the story of Edith Halpert, the Jewish woman who started the art gallery market in New York City.

Over 200 women participated in **Tikkun Olam Volunteers (TOV)** programs throughout the year. The Rosh Hashanah and Hanukah Package Programs, the Douglas and Barbara Bloom Matzah Factory, and Bookstock were all successful thanks to the participation of the TOV volunteers.







connections

הגן הארכיאולוגי ירושלים  
الحديقة الأثرية، القدس

The Jerusalem Archaeological Park

בחסותו של ויליאם דוידסון  
Endowed by William Davidson

young adult division





Federation's Young Adult Division offered a wide range of **opportunities** for singles, couples and young families to become connected to the Detroit Jewish community.

For the first time in its history, **Federation's Young Adult Division (YAD)** raised over \$1 million for Federation's annual fundraising effort.

**YAD's Social Committee** and the Imagine Young Adult group of Temple Israel came together 100 strong in the second Skate for Israel event to raise money for the Israel Emergency Fund. A portion of the ticket sales went to this fund.

YAD's Social Committee held its annual Latke Vodka party downtown at Centaur Bar to celebrate Hanukah. Over 200 people came out for this holiday celebration, the largest turn-out yet.

**The Jewish Life Committee** held a bus tour of Old Jewish Detroit where over 80 participants, young and old, visited sites where Michigan Jews made so many contributions to their state and the nation. Young Adults brought their "Bubbies" (BYOB – Bring your Own Bubbie) as an attempt to connect generations through years of Jewish history in Downtown Detroit.

The Jewish Life Committee hosted its annual Shabbat Dinner Exchange Program where families all across the metropolitan area opened up their homes. Over 60 singles, couples, and Jewish young adults across the spectrum of observance participated.

Monthly **Torah on Tap** became a mainstay in YAD's calendar this year due to growing popularity. Rabbi Leiby Burnham, Jewish Life Committee member and YAD Board Member, gives an inspiring and uplifting Torah schmooze at different bars each month.

**The Couples Committee** hosted its annual Progressive Dinner Event. This year, the theme was "Tastes of Israel" to celebrate Israel's 60th Birthday. Kosher caterers throughout the area generously donated the food for this event. Over 35 couples progressed to three different homes.



connections

agencies





Our community's response to the 93 residents affected by the Hechtman II Apartment fire was a microcosm of the longstanding **connection** between the Federation and its agencies, and the connection between the agencies themselves.

**Jewish Family Service (JFS)** served more than 600 families in financial crisis over the last year by providing food and gas certificates, and cash payments for rent and utilities for those dealing with unemployment, catastrophic illness, and impending home foreclosure. JFS Home Care workers helped 325 older adult clients maintain their independence by providing almost 30,000 hours of service. JFS provided 28,387 rides last year to 1,146 individual older adult clients, primarily for medical appointments.

**Hebrew Free Loan's (HFL)** portfolio of \$1.425 million now assists 767 community members, many of whom require basic living needs.

**Jewish Family Service** placed an intake professional in HFL's office to assist the growing number of prospective borrowers.

**JVS** provided an array of human services to the Jewish community, including the administration of the **Jewish Education Loan Service (JELS)** jointly with **Hebrew Free Loan**. Students received counseling and assistance in obtaining financial aid, and seminars helped parents plan for their child's college education. Last year, JELS arranged for \$443,400 in loans and grants to 115 students.

Due to rapid unemployment increases in the Jewish community, JVS Employment Services inaugurated **ParnossahWorksDetroit.org**, an online job search site supported by expert JVS Employment Specialists. Designed to help unemployed professionals search for employment in the privacy of their own home, it offered employers a venue to fill their open positions.

JVS also operates the **Jeanette and Oscar Cook Jewish Occupational Intern (JOIN)** program, a paid internship that matches college students with Jewish communal agencies to increase identification with the Jewish community and influence these young people to seek careers in our Jewish community.

**JVS/Jewish Home & Aging Services'** Dorothy and Peter Brown Jewish Community Adult Day Care Program sponsored its first annual fundraiser, Art for Life, featuring works by Israeli and local artists and the work of Brown Program participants. The proceeds support the needs of adults with dementia and their caregivers.

**Jewish Home & Aging Services** marked its 100th year of improving lives of the elderly in the community with many programs, including Mishpoch-Chai, a program for Holocaust survivors of metropolitan Detroit. Survivors are matched with young American Jewish families for the benefit of each.

**Jewish Apartments & Services (JAS)** offered an art enrichment program to all four of its buildings, to help augment the resident's physical and cognitive capabilities, as well as offer them a social and life-enhancing experience not found in other programming.

Everything at JAS is done with a Jewish emphasis. In addition to weekly Shabbat candle lighting, the Jewish holidays are celebrated in the buildings. As the population ages, JAS knows how the needs of the residents change and helps provide the appropriate continuum of care.



connections

agencies





The Jewish Community Center provided scholarships for the Sarah and Irving Pitt Child Development Center, the “Kids All Together” inclusion program, and day campers.

The JCC hosted its annual book fair with a wide range of speakers including Pulitzer Prize-winner Michael Chabon, Alan Dershowitz and Markus Zusak; and the Lenore Marwil Film Festival celebrated its 10th anniversary.

More than 1,000 guests attended the Janice Charach Gallery’s PostSecret exhibit, and historian Deborah Lipstadt was one of the memorable speakers through Seminars in Adult Jewish Enrichment (SAJE).

A generous donation to the JCC will create a fully equipped 400-seat theatre in the D. Dan and Betty Kahn Building, in West Bloomfield. Once completed, the Mandell L. & Madeleine H. Berman Theatre will host ongoing Center programs.

Extensive renovations were made at the JCC’s Jimmy Morris Prentis Bulding in Oak Park, including a bright playground with something for children of every age.

The Jewish Community Relations Council, the community’s hub for Israel advocacy, mobilized nearly 1,000 pro-Israel voices through weekly Israel Advocacy Network (IAN) e-letters. Council joined with the Fellowship of Israel and Black America (FIBA) to sponsor an IsraelSixty trip to Israel for Detroit area Jews and African Americans, including participation in Israel’s first Martin Luther King, Jr. Israel Awards ceremony in Jerusalem.

Tamarack Camps supervised six different camping facilities and served approximately 1,850 children and families.

Last year, campers took part in tree planting ceremonies that emphasized the importance of trees – both ecologically, as well as in the Jewish tradition.

Tamarack Camps also offered a wide variety of family camping programs, including Bubbie-Zaydie weekends, synagogue and temple family camps, New Year’s Family Camp, Single Jewish Parent Family Camps, youth group retreats and family reunions.

Last year, Tamarack Camps distributed \$930,000 in financial assistance to 44 percent of campers, an unprecedented amount.

University Hillels throughout Michigan participated in numerous events and programs to bolster Jewish activities on campus.

Hillel of Metropolitan Detroit sponsored a myriad of Israel-related activities, ranging from a busload of students participating on Taglit: birthright Israel, to an Israel Fellowship for 10 students.

As one of HMD’s many efforts to keep young adults in Michigan, Jewish law students began working with local attorneys to help law graduates find local employment.

Michigan State University Hillel offered over 200 programs to the 3,500 Jewish students on campus, including two Taglit: birthright Israel trips and an Alternative Spring Break trip to Buenos Aires, Argentina, a community-service trip in which the students helped rebuild a Jewish Community Center.

This year, University of Michigan Hillel sent 24 students to the UJC General Assembly in Nashville, the largest delegation of any school in the country. Students also participated in community-service Alternative Spring Break trips to Brazil and Nicaragua and a joint Jewish/Muslim student trip to New Orleans.

Over 1,000 Jewish teens participated in BBYO’s Judaic, leadership, social and athletic programming last year, and over 400 high school students attended the Regional Convention, helping to make it the largest gathering in over 10 years.

The Jewish Housing Association of Metropolitan Detroit, Inc. is a partnership of Jewish Family Service and Hebrew Free Loan that was formed to assist the growing number of Jewish families unable to afford their house payments.

In addition to providing direct help with foreclosure, JHA addresses the complexity of economic, emotional and other issues that families face.

Federation is heavily invested in providing scholarships and other funding for six Jewish day schools. Their highlights are listed in the Jewish Education section on page 4.



# The Fred M. Butzel Award

Established in 1951, the Fred M. Butzel Award is recognized as the highest honor the Detroit Jewish community can bestow upon its leaders.



If you've been to Israel on a Federation mission, you've probably run into Larry Jackier.

Since his first trip in 1974, joining good friend Stanley Frankel during a Federation Junior Division leadership cabinet trip, Larry has energized others about the Jewish State.

After 101 trips to Israel, 30 of which were attending or leading missions, Israel has energized him.

He has also traveled to Eastern Europe and Russia, on behalf of Jews living behind the Iron Curtain.

Larry credits his parents, Joseph H. (z'l) and Edythe Jackier, who both received the Butzel award in 1985, for giving him a love of Israel and showing him the importance of being involved to help Jews here and around the world.

And he credits friendships made in Federation's Leadership Cabinet – Stanley Frankel, Joel Gershenson, Richard Krugel, Peter Alter, Irwin Alterman, and Michael Feldman among others – for giving him a love for his community, and showing him how to stay connected to the Jewish people with the spirit of *Tikkun Olam*.

He joins Jane Sherman, Stanley Frankel and Paul D. Borman as second-generation Butzel Award recipients.

Larry's long list of community service includes chairman and member of the International Board of Governors of The Technion; president and executive committee chair of the Jewish Federation of Metropolitan Detroit, Detroit Men's ORT. His board memberships include the American Society for Technion, Friends of the IDF, Jewish National Fund, and the United Jewish Foundation.

He was Federation President from 2001-2004, Detroit's Miracle Mission II chairman in 1995, Allied Jewish Campaign chairman, 1991-1992; Project Renewal Committee chairman, 1987-1990; national vice chairman and chairman of mission of the United Jewish Appeal, 1980-1986; United Jewish Appeal National Young Leadership Cabinet chairman, 1980-1981; and Jewish Community Center of Metropolitan Detroit vice president, 1974-1978.

Larry, a private-practice attorney, graduated from the University of Michigan in 1964, and Yale Law School in 1967. He and his wife, Eleanor Folbe Jackier, have seven children and 20 grandchildren.

## leadership



# Lifetime Achievement

Celebrating longevity of service and a range of activity, Federation's Lifetime Achievement Award was established in 2001 to recognize outstanding individuals whose spirit of volunteerism has had lasting benefits to our community.



## NORA BARRON

Nora Barron has left an indelible mark on the Jewish community here and around the world. Her lifetime of Jewish involvement has taken her to leadership positions as past president of JVS, co-chair of Federation's Campaign cabinet and the Partnership 2000 Steering Committee. She is also a board member of The Jewish Fund, the Israel and Overseas Committee, the American Jewish Joint Distribution Committee Board of Directors, and a member of the Board of Governors of the Jewish Federation of Metropolitan Detroit.

"Community involvement and volunteering locally, nationally and throughout the world has truly enriched my life. How lucky I am to have had this opportunity."

## NORMAN D. KATZ

Norman Katz has long been involved in the Jewish community. Since his first leadership position as president of Federation's Junior Division in 1954, he has served as president of United Hebrew Schools, chaired the Allied Jewish Campaign and Federation's Culture and Group Services Division, and has served on many boards, including the American Jewish Committee, the Jewish Community Council, Jewish Home for the Aged, and JVS. He was also a member of Federation's Finance and Partnership 2000 Steering committees.

"We have a great Jewish community, but we have to keep working at it to keep it great."

# leadership

# Young Leadership Awards

Each year the Jewish Federation of Metropolitan Detroit recognizes three outstanding individuals who have demonstrated exceptional leadership ability and commitment to the community.



## SYLVIA SIMON GREENBERG AWARD / FRANCINE NEWMAN

Francine Newman, a dedicated and passionate leader in Federation's Women's Department, has been truly committed to involving young women in Federation activities. She has chosen to be a leader in both education and fundraising projects. Francine is the associate chair of Women's Department's Food for Thought program, a co-chair of the Pomegranate Division and Itsa Mitzvah committee member, and sits on the Women's Department Board of Directors. She has been an associate chair of Community Connections, a Young Adult Division board member, and a member of the Community Services Division.

"Working with Federation allows me to make sure that there is a secure Jewish future for my children, our family and our friends."



## FRANK A. WETSMAN AWARD / BRIAN D. SIEGEL

Brian D. Siegel has devoted countless hours to promote the Jewish community and has shown pragmatic vision as a leader. Brian was instrumental in creating the Unfettered program, and is a current member of its advisory committee. He was co-chair of the Grosfeld VI Leadership Mission and also serves on the boards of the Jewish Community Center, Fresh Air Society and the Board of Governors of the Jewish Federation of Metropolitan Detroit.

"I am so proud to be involved and I hope that I am able to communicate to my children the critical importance of taking an affirmative role in the future of our local and worldwide Jewish Community. I have told my children that they are actors in a 3,000 year old play...all they have to decide is what role they want to play."



## MARK FAMILY AWARD / GAYLE FRIEDMAN GOLD

Gayle Gold has shown commitment and passion to the Jewish people through her many roles in the Young Adult Division. Since participating in the Young Adult Division's Singles Mission in 2000, Gayle worked her way through the ranks of YAD, joining virtually every committee on behalf of Federation. A former YAD president, she has been the YAD liaison to the Women's Department board and executive committee, and the CORE committee. Gayle currently serves as co-chair of the marketing committee and is on the Board of Governors of the Jewish Federation of Metropolitan Detroit.

"For me, the most rewarding part of being a leader has been helping others understand that by making community a priority they are teaching their children, and someday, their children's children about *Tzedakah* and *Tikkun Olam*."



## Benard L. Maas Prize

## Grinspoon-Steinhardt Award

The Benard L. Maas Prize recognizes an individual who has enriched our Jewish life and community through their creative accomplishments, the exploration of Jewish cultural issues and the creation of innovative works of art.

The Grinspoon-Steinhardt Award, a national honor, was established in 2000 by the Harold Grinspoon Foundation and the Jewish Life Network/Steinhardt Foundation. This award recognizes outstanding Jewish educators who have demonstrated a career commitment to their field.



### BENARD L. MAAS PRIZE FOR ACHIEVEMENT IN JEWISH CULTURE AND CONTINUITY IN THE AREA OF FINE ARTS / JEFFREY ABT

To so many different people and organizations in the community, Jeffery Abt is considered an advisor, a source of counsel and a friend.

An associate professor in the Department of Art & Art History at Wayne State University, Abt received his Bachelor's and Master of Fine Arts degrees from Drake University in Iowa.

His paintings and drawings are in the permanent collections of several museums in the Midwest.

Abt is also an award-winning author and book illustrator, and sits on the editorial board of the Wayne State University Press, one of the nation's leading publishers of scholarly and general interest books in Jewish studies.

"In receiving the Maas Prize, I hope that I can call attention to the Wayne State University Press's important and insufficiently known contributions to Jewish life, and to its need for our support."



### GRINSPOON-STEINHARDT AWARD / RABBI PINCHAS AMIOR

Rabbi Amior, a teacher at Akiva Hebrew Day School for the past three years, has been involved in Jewish education in Israel and the United States for 27 years. He teaches Talmud and Hebrew language to middle and high school students. He also teaches Chidon, an academic decathlon demonstrating mastery of the Bible. Two of his students placed

in the top 10 this year in the International Bible Contest in Israel.

Born in Beer Sheva, Israel, he received a Master of Arts degree in Tanach from Bar Ilan University and a Ph.D. in Jewish Philosophy from the Jewish University of America, based in Chicago.

"My ambition as an educator is to instill within my students a profound appreciation of the legacy of our ancestors, to reinforce their identification with the Jewish nation, and to strengthen their connection to Eretz Yisrael; to raise the level of my students' Jewish consciousness through the study of Tanach while pursuing an in-depth understanding of the history and heritage of the Jewish people."

## Mandell L. & Madeleine H. Berman Award

## Susan & Norman Pappas Innovative Idea Award

The Mandell L. and Madeleine H. Berman Award, established in 1988, recognizes the outstanding contributions of professionals employed by the Jewish Federation of Metropolitan Detroit and its partner agencies.

The Susan and Norman Pappas Innovative Idea Award, bestowed by the Jewish Federation of Metropolitan Detroit, was established in 1998 with a generous gift from Susan and Norman Pappas. The award honors exceptional achievement and creativity in employees of the Jewish Federation of Metropolitan Detroit.



### MANDELL L. AND MADELEINE H. BERMAN AWARD / JONAH GELLER

Jonah Geller, executive director of Tamarack Camps since 2002, has worked professionally in the camping field for 10 years, and spent an additional 19 summers as a participant or staff member at Jewish summer camps and informal Jewish education programs in Israel.

the important role that camping can play in building committed young Jews, Jonah has worked with Federation's Israel and Overseas Services Department to ensure quality programs for Israeli campers, Teen Mission, and Federation's Family Miracle Mission.

A model of strong vision, effective management, and deep passion for

"A Jewish camp is where children and adults can learn about themselves, explore their Judaism, and realize the incredible value of a larger Jewish community. It played these roles for me as a child and continues to have an impact on me everyday as an adult. To see it take shape for future generations now is truly magical."



### SUSAN AND NORMAN PAPPAS INNOVATIVE IDEA AWARD / MICHAEL BENGHIAT

Joining Federation in 2007, Michael Benghiat brought over 20 years of business development, marketing and sponsorship experience with him, much of which was within the sports and entertainment industry. Working on the development and stewardship of the community's donors and new donor acquisition through new programs and initiatives, he is

involved in the long-term direction and overall success of Federation's Community Campaign.

He played a significant role in the development of Federation's "No Family Stands Alone" initiative, a program to educate our community about the critical resources and services available to those in need.

"Charlotte Perkins Gilman, a prominent American novelist, said 'The first duty of a human being is to assume the right functional relationship to society – more briefly, to find your real job, and do it.' After working many years in the sports business, I quickly realized I am now with the best teams there are – the Federation team and our Jewish community."



# Previous Honorees

## The Fred M. Butzel Award

1951: Julian H. Krolik  
 1952: Henry Wineman  
 1953: William Friedman  
 1954: Abraham Sreere  
 1955: Mrs. Joseph H. Ehrlich  
 1956: Samuel H. Rubiner  
 1957: Henry M. Butzel  
 1958: Abe Kasle  
 1959: Sidney J. Allen  
 1960: Theodore Levin  
 1961: Irwin I. Cohn  
 1962: Mrs. Henry Wineman  
 1963: Leonard N. Simons  
 1964: Max M. Fisher  
 1965: Nate S. Shapero  
 1966: Morris Garvett  
 1967: Tom Borman  
 Abraham Borman  
 1968: Mrs. Harry L. Jones  
 1969: Paul Zuckerman  
 1970: Hyman Safran  
 1971: Louis Berry  
 1972: Erwin S. Simon  
 1973: Celia Meyers Broder  
 1974: Alan E. Schwartz  
 1975: George M. Stutz  
 1976: Jack O. Lefton  
 1977: Golda Krolik  
 1978: Mandell L. Berman  
 1979: Stanley J. Winkelman  
 1980: Phillip Stollman  
 Mrs. Max (Frieda) Stollman  
 1981: Irwin Green  
 1982: Philip Slomovitz  
 1983: Martin E. Citrin  
 1984: Samuel Frankel  
 1985: Joseph H. Jackier  
 Edythe Jackier  
 1986: David Handleman  
 1987: George M. Zeltzer  
 1988: Avern L. Cohn  
 1989: Matilda Brandwine

1990: Joel D. Tauber  
 1991: Jack A. Robinson  
 1992: William M. Davidson  
 1993: Conrad L. Giles  
 1994: David S. Mondry  
 1995: Dulcie Rosenfeld  
 1996: David B. Hermelin  
 1997: Mark E. Schlusel  
 1998: Jane F. Sherman  
 1999: David K. Page  
 2000: Carolyn Greenberg  
 Hugh W. Greenberg  
 2001: Doreen Hermelin  
 2002: Robert H. Naftaly  
 2003: Michael W. Maddin  
 2004: Stanley Frankel  
 2005: Penny B. Blumenstein  
 2006: Diane & Emery Klein  
 2007: Hon. Paul D. Borman

## Frank A. Wetsman Young Leadership Award

1961: Merle A. Harris  
 1962: Robert Kasle  
 1963: N. Brewster Broder  
 1964: Ronald L. Greenberg  
 1965: Herbert A. Aronsson  
 1966: Alan E. Luckoff  
 1967: Kaye G. Frank  
 1968: Robert A. Steinberg  
 1969: Thomas I. Klein  
 1970: Joel D. Tauber  
 1971: David K. Page  
 1972: Allan Nachman  
 1973: Conrad L. Giles  
 1974: Stanley Frankel  
 1975: Michael W. Maddin  
 1976: Lawrence S. Jackier  
 1977: Robert Slatkin  
 1978: Robert H. Naftaly  
 1979: Robert M. Citrin  
 1980: Joel Gershenson  
 1981: Richard Krugel  
 1982: Martin Hart

1983: Mark E. Schlusel  
 1984: Peter M. Alter  
 1985: Michael S. Feldman  
 1986: Dan G. Guyer  
 1987: Norman A. Pappas  
 1988: Howard J. Tapper  
 1989: Benjamin F. Rosenthal  
 1990: Owen Z. Perlman  
 1991: Douglas M. Etkin  
 1992: Ronald A. Klein  
 1993: Lawrence S. Lax  
 1994: David R. Victor  
 1995: Mitchell A. Mondry  
 1996: Gary Torgow  
 1997: Steven R. Schanes  
 1998: Robert B. Kleiman  
 1999: Scott A. Eisenberg  
 2000: Hannan Lis  
 2001: Eugene Sherizen  
 2002: Dennis S. Bernard  
 2003: Jeffrey B. Schlusel  
 2004: Todd Sachse  
 2005: Scott Kaufman  
 2006: Mark Adler  
 2007: Matthew Lester

## Sylvia Simon Greenberg Young Leadership Award

1965: Ruth K. Broder  
 1966: Carolyn Greenberg  
 1967: Shirley Harris  
 1968: Dulcie Rosenfeld  
 1969: Lee Jaffe  
 1970: Sissi Lapides  
 1971: Jane Sherman  
 1972: Bernice Greenberg  
 1973: Renee Mahler  
 1974: Shelby Tauber  
 1975: Nancy Hirsch  
 1976: Edie Slotkin  
 1977: Diane Shekter  
 1978: Donna Slatkin  
 1979: Judy Frankel  
 1980: Janet Levine

1981: Susan Citrin  
 1982: Linda Lee  
 1983: Sharon Hart  
 1984: Sally Krugel  
 1985: Marcy Feldman  
 1986: Cheryl Guyer  
 1987: Beverly Liss  
 1988: Lauren Kogan-Liss  
 1989: Marta Rosenthal  
 1990: Diane Ash  
 1991: Susan E. Alterman  
 1992: Kathleen Wilson Fink  
 1993: Lynn Sachse  
 1994: Caren Landau Levine  
 1995: Stacey A. Crane  
 1996: Janis Roszler  
 1997: Marcie Hermelin Orley  
 1998: Terri Farber Roth  
 1999: Suzan Folbe Curhan  
 2000: Lisa Lis  
 2001: Elizabeth Kanter Groskind  
 2002: Sari M. Cicurel  
 2003: Karen Alpiner  
 2004: Jennifer Silverman  
 2005: Amy Schlusel  
 2006: Heidi Fischgrund Budaj  
 2007: Jodi Goodman

## Mark Family Young Leadership Award

1993: Richard B. Broder  
 1994: Suzan Folbe Curhan  
 1995: Elizabeth Kanter  
 Groskind  
 1996: Richard C. Blumenstein  
 1997: Eric J. Gould  
 1998: Joshua D. Mondry  
 1999: Sari Cicurel  
 2000: Paul R. Silverman  
 2001: Scott Kaufman  
 2002: Barbra Giles  
 2003: Joshua F. Oppener  
 2004: Sheri Wagner  
 2005: Brad "Bubba" Urdan

2006: Lorne W. Gold  
 2007: Brian Satovsky

## William H. Boesky Memorial Award

1966: Donald J. Purther  
 1967: Maida Portnoy  
 1968: Paul D. Borman  
 1969: Allan Nachman  
 1970: Stanley Frankel  
 Donna Slatkin  
 1971: Michael W. Maddin  
 1972: Robert Slatkin  
 1973: Robert M. Rubin  
 1974: Burton D. Farbman  
 1975: Edward A. Lumberg  
 1976: Richard J. Maddin  
 1977: Neil A. Satovsky  
 1978: Jeffrey N. Borin  
 1979: Jonathan M. Jaffa  
 1980: Kenneth J. Safran  
 1981: Benjamin F. Rosenthal  
 1982: James Deutchman  
 1983: James Safran  
 1984: Julie Borim  
 1985: Jeffrey H. Howard  
 1986: Bernard Kent  
 1987: Betsy Snider Heuer  
 1988: Norman H. Beitner  
 1989: Dennis S. Bernard  
 Lisa J. Somers  
 1990: Paul S. Magy  
 1991: Brian E. Kepes

## The Mandell L. & Madeleine H. Berman Award

1988: Samuel Lerner  
 1989: Nira Lev  
 1990: Sylvia Serwin  
 1991: Joyce Keller  
 1992: Carol Rosenberg  
 1993: Carol Kaczander  
 1994: Harlene Winnick Appelman  
 1995: Rhoda Raderman

1996: Michael E. Berke  
 1997: Margaret Weiner  
 1998: Margot J. Parr  
 1999: David Gad-Harf  
 2000: Miriam Starkman  
 2001: Anita Naftaly  
 2002: Rabbi Avraham S. Cohen  
 2003: Rabbi Judah Isaacs  
 2004: Marion S. Freedman  
 2005: Marsha Goldsmith Kamin  
 2006: Sharon Alterman  
 2007: Allan "Geli" Gelfond

## Lifetime Achievement Award

2000: Marvin Goldman / Maxwell Jospey  
 Diane Hauser / Josephine Weiner  
 2001: N. Brewster Broder / Milton J. Miller  
 Alfred Deutsch / Melba Winer  
 2002: Helen August / Marvin Danto  
 Ruth Broder / Beryl Winkelman  
 2003: Jerome Y. Halperin / Helen Zuckerman  
 2004: Margot Colville / Shirley Harris  
 Warren Coville / Merle Harris  
 2005: Vivian Berry / Joseph H. Orley  
 Graham A. Orley  
 2006: Jim August / Ellen Labes  
 Stuart Hertzberg  
 2007: Ed Meer / Edie Slotkin

## The Susan & Norman Pappas Innovative Idea Award

1999: Joseph Imberman  
 2000: Linda Blumberg  
 2001: Susan Kamin  
 2002: Bernice Herd  
 2003: David Contorer / Allan Gelfond  
 2004: Jon Taylor  
 2005: Andrew Echt  
 2006: Tova Dorfman / Naomi Rockowitz  
 2007: Kari Alterman

# Federation's Family of Agencies

## CALL IT OUR INFRASTRUCTURE.

Call it our lifeline. At the heart of our caring community are the agencies that provide our community services, working as a team with the Federation. Here in metro Detroit, we are all the beneficiaries of hundreds of social services, educational and cultural opportunities and programs geared for every age and stage of life.

For information about Federation's family of agencies and their programs, please refer to the contacts listed below.

### AKIVA HEBREW DAY SCHOOL

21100 W. 12 Mile Road  
Southfield  
Sidney Katz , Executive Director  
Howard Korman, President  
Rabbi Dr. Yigal Tsaidi, Principal  
(248) 386-1625  
[www.akivak12.org](http://www.akivak12.org)

### B'NAI B'RITH YOUTH ORGANIZATION (BBYO)

6600 W. Maple Road  
West Bloomfield  
Arthur Siegal, Chairperson  
Eric Adelman, Executive Director  
(248) 788-0700  
[www.mibbyo.org](http://www.mibbyo.org)

### FRESH AIR SOCIETY – TAMARACK CAMPS

6735 Telegraph Road, Ste. 380  
Bloomfield Hills  
Shelly Hutton, President  
Jonah Geller, Executive Director  
(248) 647-1100  
[www.tamarackcamps.com](http://www.tamarackcamps.com)  
**HEBREW FREE LOAN**  
6735 Telegraph Road, Ste. 300  
Bloomfield Hills  
Peggy Banks, President  
Mary Keane, Executive Director  
(248) 723-8184  
[www.hfladetroit.org](http://www.hfladetroit.org)

### HILLEL DAY SCHOOL OF METROPOLITAN DETROIT

32200 Middlebelt Road, Farmington Hills  
James Berger, President  
Steve Freedman, Headmaster  
(248) 851-3220  
[www.hillelday.org](http://www.hillelday.org)

### HILLEL FOUNDATIONS

**Eastern Michigan University**  
965 Washtenaw Ave., Ypsilanti  
Merle Schwartz, Chair  
Clara Silver, Director  
(734) 482-0456  
[www.emuhillel.org](http://www.emuhillel.org)

### Metro Detroit

667 Grosberg Religious Center  
Wayne State University

5221 Gullen Mall, Detroit  
Gary Snyder, President  
Miriam Starkman, Executive Director  
(313) 577-3459  
[www.hillel-detroit.org](http://www.hillel-detroit.org)

### Michigan State University

360 Charles Street  
East Lansing  
Patrice Phillips, President  
Cindy Hughey, Executive Director  
(517) 332-1916  
[www.msuhillel.com](http://www.msuhillel.com)

### University of Michigan

1429 Hill Street, Ann Arbor  
Lorne Zalesin, Chairperson,  
Board of Trustees  
Michael Brooks, Executive Director  
(734) 769-0500  
[www.umhillel.org](http://www.umhillel.org)

### JEAN AND SAMUEL FRANKEL

### JEWISH ACADEMY OF METROPOLITAN DETROIT

6600 W. Maple Road  
West Bloomfield  
Danny Kurzmann, President  
Rabbi Eric Grossman, Headmaster  
(248) 592-5263  
[www.frankelja.org](http://www.frankelja.org)

### JEWISH APARTMENTS & SERVICES

15000 W. 10 Mile Road, Oak Park  
Laurence S. Tisdale, President

Marsha Goldsmith Kamin,  
Executive Director  
(248) 592-1106  
[www.jasmi.org](http://www.jasmi.org)

### Lillian and Samuel Hechtman Apartments

Eugene and Marcia Applebaum  
Jewish Community Campus  
Carol Dmitruk, Administrator  
(248) 661-5220

### Norma Jean and Edward Meer Apartments

Eugene and Marcia Applebaum  
Jewish Community Campus  
Marcia Mittleman, Administrator  
(248) 661-9607

### Anna and Meyer Prentis Apartments

A. Alfred Taubman Jewish  
Community Campus  
Larry Machlis, Administrator  
(248) 967-4240

### Harriett and Ben Teitel Apartments

on the A. Alfred Taubman  
Jewish Community Campus  
Wendy Watson, Administrator  
(248) 967-2224

### JEWISH COMMUNITY CENTER

Todd Sachse, President  
Mark Lit, Executive Director  
(248) 661-1000  
[www.jccdet.org](http://www.jccdet.org)



**D. Dan and Betty Kahn Building**  
Eugene and Marcia Applebaum  
Jewish Community Campus  
6600 W. Maple Road, West Bloomfield  
(248) 661-1000

**Jimmy Prentis Morris Building**  
A. Alfred Taubman Jewish  
Community Campus  
15110 W. 10 Mile Road, Oak Park  
(248) 967-4030

**JEWISH COMMUNITY  
RELATIONS COUNCIL**  
6735 Telegraph Road, Suite 205  
Bloomfield Hills,  
Todd Mendel, President  
Robert Cohen, Executive Director  
(248) 642-5393  
[www.detroitjcrc.org](http://www.detroitjcrc.org)

**JEWISH FAMILY SERVICE**  
Sandy Danto, President  
Norman R. Keane, Executive Director  
(248) 592-2300  
[www.jfsdetroit.org](http://www.jfsdetroit.org)  
Graham & Sally and  
Joseph & Suzanne Orley Building  
6555 W. Maple Road,  
West Bloomfield  
25900 Greenfield Road,  
Suite 405, Oak Park

**JEWISH HOME & AGING SERVICES**  
6710 W. Maple Road, West Bloomfield  
[www.jhas.org](http://www.jhas.org)

**Edward I. and Freda Fleischman  
Residence/Blumberg Plaza**  
Mark Kowalsky, President  
Carol Rosenberg, Executive Director  
(248) 661-2999

**JVS**  
Brian Meer, Chair  
Barbara Nurenberg,  
President and CEO  
[www.jvsdet.org](http://www.jvsdet.org)

**Rose and Sidney Diem Building**  
29699 Southfield Road, Southfield  
(248) 559-5000

**Arnold E. Frank Building**  
4250 Woodward Avenue, Detroit  
(313) 833-8100  
(248) 661-8100 – West Bloomfield  
(248) 294-5890 – Macomb

**YESHIVA BETH YEHUDAH**  
15751 W. Lincoln Drive, Oak Park  
Gary Torgow, President  
Rabbi Eli Mayerfeld,  
Executive Director  
(248) 557-6750

**Boys Division**  
Milton and Lois Shiffman  
Boys Building  
(248) 557-9380

**Girls Division**  
Sally Allan Alexander  
Beth Jacob School  
(248) 544-9070

**Pre-School Division**  
Norma Jean and  
Edward Meer Center  
(248) 557-3164

**YESHIVAS DARCHEI TORAH**  
21550 W. 12 Mile Road, Southfield  
Dr. Henry Kroll, President  
Rabbi Tzvi Jacobson, Director  
(248) 357-3560

**YESHIVA GEDOLAH OF  
GREATER DETROIT**  
24600 Greenfield Road, Oak Park  
Dr. Saul Weingarden, President  
Rabbi Peretz Rushnawitz,  
Executive Director  
(248) 968-3360

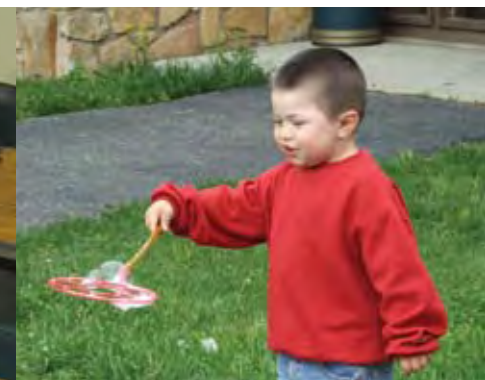
**Programs sponsored  
by Federation**

**ELDERLINK**  
Fred Blechman, Chairperson  
Linda Blumberg, Director  
(248) 592-2240

**MICHIGAN JEWISH  
CONFERENCE**  
P.O. Box 366, E. Lansing, MI  
Neal Elyakin, Chair  
Susan R. Herman, Director  
(517) 449-1562

**SHALOM STREET**  
6600 W. Maple Road, West Bloomfield  
Sharon Hart, Chair  
Paula Glazier, Co-Chair  
Wendy Sadler, Director  
(248) 432-5454  
[www.shalomstreet.org](http://www.shalomstreet.org)

**SUPPORTIVE COMMUNITIES**  
Perry Ohren, Director  
(248) 592-2302



## Putting Our Resources to Work

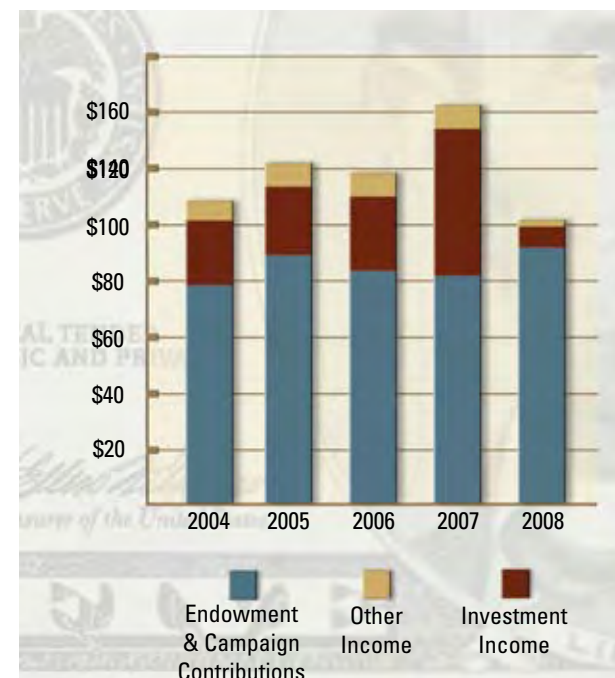
### Combined Revenue

Federation's 2008 Annual Campaign	\$42,219,500
Jewish Community Endowment Fund:	
PACE and Other Restricted Funds	16,565,000
Agency Capital and Endowment Funds	3,957,000
Supporting Foundations and Philanthropic Funds	25,800,000
Investment and Other Income	12,858,500
<b>Total Revenue:</b>	<b>\$101,400,000</b>

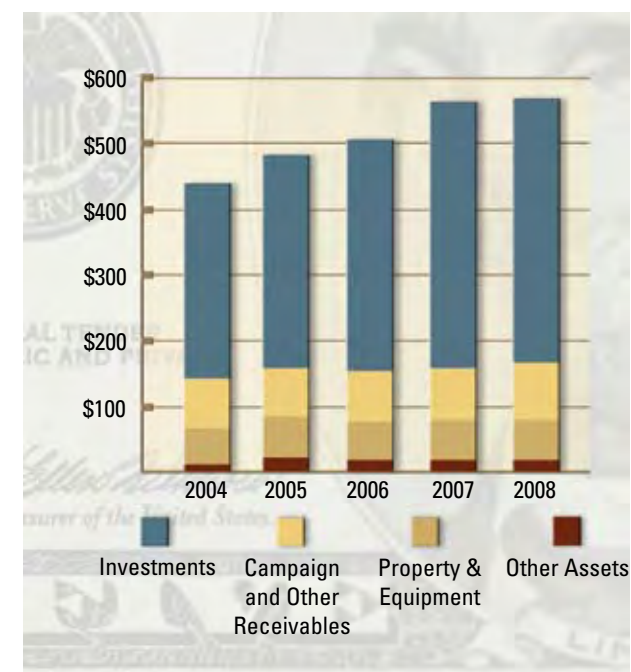
### Combined Distributions

Local Agencies	\$22,400,000
Agency Capital Project Expenditures	3,200,000
Overseas Programs, Services and United Jewish Communities	17,300,000
Other Charitable Organizations	36,800,000
Other Program Services	10,900,000
Fundraising	3,400,000
Administrative	3,600,000
Other Supporting Services	900,000
<b>Total Distributions:</b>	<b>\$98,500,000</b>

### Profile of Combined Revenue (IN MILLIONS)



### Profile of Total Assets (IN MILLIONS)





## Campaign Allocations for 2008

### 2008 Campaign Achievement

Annual Campaign	\$34,000,000
Challenge Fund/One Time Gifts	8,219,500
<b>Total-Campaign Achievement</b>	<b>42,219,500</b>
Less: Administrative Expenses	(3,500,000)
Less: Reserve for Shrinkage	(850,000)
<b>Net Campaign Achievement</b>	<b>37,869,500</b>
<b>Total-Sources of Funds</b>	<b>\$37,869,500</b>

### Israel and Overseas

JAFI/JDC/UJC "Core" Support/ Elective Programs	\$11,035,650
Israel Emergency Fund Grants/ Donor Designations	3,077,000
JFMD Israel and Overseas Services	582,500
Unallocated Overseas Funds	47,350
<b>Total-Israel and Overseas</b>	<b>\$14,742,500</b>

### Local Agency and Direct Programs

Alliance for Jewish Education	\$1,205,000
Akiva Hebrew Day School	504,448
Hillel Day School	685,725
Jean and Samuel Frankel Jewish Academy of Metropolitan Detroit	154,114
Yeshiva Beth Yehudah	904,716
Yeshivas Darchei Torah	244,014
Yeshiva Gedolah of Greater Detroit	132,400
Special Needs Allocation	10,000
Supplemental School Scholarship Fund	532,664
<b>Total-Jewish Education Services</b>	<b>\$4,373,081</b>

### Identity Building & Community Outreach

B'nai B'rith Youth Organization	\$78,356
Tamarack Camps	598,065
EMU Hillel	97,211
Hillel of Metro Detroit	184,736
MSU Hillel	187,791
U-M Hillel	200,500
Jewish Community Center	1,733,437
Mission Subsidies	135,000
Birthright Israel	235,322
Corporate Designation	20,000
<b>Total-Jewish Identity/Community Outreach</b>	<b>\$3,470,418</b>

### Advocacy & Aid to At-Risk Populations

ElderLink	\$175,000
Hebrew Free Loan	106,458
Hebrew Free Loan (JELS)	18,895
Jewish Community Relations Council	488,810
Jewish Family Service	2,162,007
Jewish Family Service Financial Assistance Fund	257,500
Jewish Apartments & Services	226,470
Jewish Home and Aging Services	309,774
JVS (incl. Refugee Services)	1,118,336
Michigan Jewish Conference	77,000
Corporate Designations	110,000
Older Adults-In-Home Support Services (JAS/JFS)	30,000
YAD Above and Beyond (JAS/JFS)	37,500
<b>Total-Advocacy/Aid to At-Risk Populations</b>	<b>\$5,117,750</b>

### Additional Local Support

Agency Incentive Grants	\$7,688
Capital Needs Reserve	995,000
Community Security Director	100,000
Campus Security Plan	160,000
UJC Secure Communities Network	12,500
Fund Guarantees/Loan Obligations	
Supporting Local Services	1,700,000
UJF Endowment Development and Administration	3,705,037
Campaign Reserve for Local Needs	150,000
<b>Total-Additional Local Support</b>	<b>\$6,830,225</b>
<b>Total-Local Agency/Program Allocations</b>	<b>\$19,791,474</b>
<b>Sakwa Challenge/Local Agencies</b>	<b>\$2,809,500</b>

### National Agency Allocations

American Jewish Committee	\$21,750
Anti-Defamation League	21,750
B'nai B'rith Youth Organization	20,750
Coalition for the Advancement of Jewish Education (CAJE)	8,375
Michigan Hillel Consortium	7,775
National Jewish Center for Learning and Leadership (CLAL)	---
Jewish Council for Public Affairs	
Israel Advocacy Initiative	10,000
<b>Sub-Total</b>	<b>\$90,400</b>

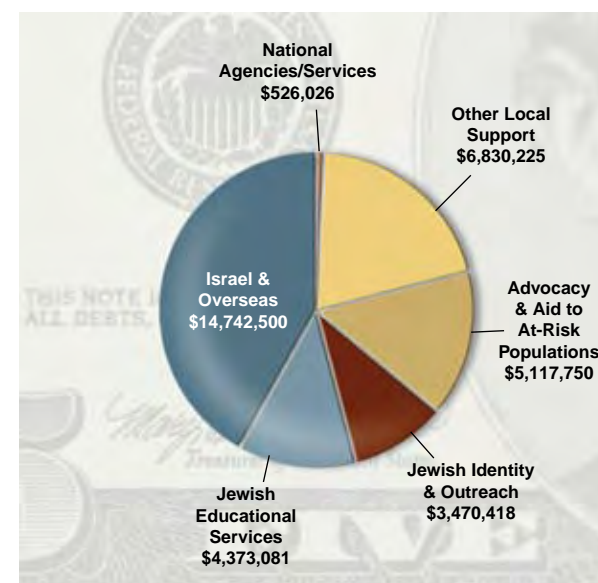
National Federation/Agency Alliance	\$420,955
Association of Jewish Family & Children's Agencies	
Hillel: Foundation for Jewish Campus Life	
Jewish Community Center Association	
Jewish Education Service of North America	
National Conference on Soviet Jewry	
National Foundation for Jewish Culture	
Jewish Council for Public Affairs	
Hebrew Immigrant Aid Society	
Jewish Telegraphic Agency	
National Central Services	\$14,671

**Total-National Agencies/Central Services** **\$526,026**

**Total-Domestic** **\$23,127,000**

**Total-Domestic Allocation  
and Israel & Overseas** **\$37,869,500**

### 2008-2009 ALLOCATIONS



## Philanthropic Funds & Supporting Foundations

in 2007-2008, more than 800 organizations and agencies received distributions from philanthropic funds and supporting foundations under the management of the United Jewish Foundation. This is a partial list of these distributions, which were made upon the recommendation or approval of each fund's donor family or board of directors.

### Local Constituent Agencies of the Jewish Federation

Akiva Hebrew Day School  
B'nai B'rith Youth Organization  
Fresh Air Society/Tamarack Camps  
Hebrew Free Loan  
Hillel Day School  
Hillel Foundation—EMU  
Hillel Foundation—MSU  
Hillel Foundation—U-M  
Hillel Foundation of Metropolitan Detroit  
Jean and Samuel Frankel Jewish  
Academy of Metropolitan Detroit  
Jewish Apartments & Services  
Jewish Community Center  
Jewish Community Relations Council  
Jewish Family Service  
Jewish Home and Aging Services  
JVS  
Yeshiva Beth Yehudah  
Yeshivas Darchei Torah  
Yeshiva Gedolah

### National Jewish Agencies

American Committee for the  
Weizmann Institute  
American Friends of Alyn Hospital  
American Friends of Hebrew University  
American Friends of Orr Shalom  
American Friends of Tel Aviv University  
American Israeli Education Foundation  
American Jewish Committee  
American Jewish Joint  
Distribution Committee

American ORT Federation  
American Red Magen David for Israel  
American Society for Technion  
Anti-Defamation League  
Bar-Ilan University  
Birthright Israel Foundation  
B'nai B'rith Foundation  
Friends of the Israel Defense Forces  
Hadassah  
Israel Emergency Alliance  
Israel Policy Forum  
Jewish Education Service of North America  
Jewish National Fund  
Jewish Theological Seminary of America  
Labor Zionist Alliance  
Na'amat USA  
National Council of Jewish Women  
National Yiddish Book Center  
Nazareth Fund  
New Israel Fund  
Ohr Somayach International  
Simon Wiesenthal Center  
U.S. Holocaust Memorial Museum  
Union of American Hebrew Congregations  
United Jewish Communities  
United Synagogue of Conservative Judaism  
World Jewish Congress  
Zionist Organization of America

### Other Jewish and Non-Jewish Charitable Organizations

Adat Shalom Synagogue  
Aish Hatorah

ALS of Michigan  
Alzheimer's Association  
Ameinu  
American Cancer Society  
American Civil Liberties Union  
American Diabetes Association Inc.  
American Heart Association  
American National Red Cross  
Americans for the Arts  
Amyotrophic Lateral Sclerosis Association  
Aspen Music Festival and School  
Asthma & Allergy Foundation of America  
Bais Yaakov School for Girls  
Bear Hug Foundation  
Beaumont Foundation  
Big Brother and Big Sisters of America  
Birmingham-Bloomfield Art Center  
The Birmingham Temple  
Bread for the Journey International  
Breast Cancer Research Foundation  
Cedars-Sinai Medical Center  
Chamber Music Society of Detroit  
Charity Global  
Child and Family Advocacy Program  
Childhaven  
Children's Center of Wayne County, Inc.  
Children's Hospital Foundation  
Citizen's Research Council of Michigan  
City Year  
Cohn Haddow Center for Judaic Studies  
Commentary  
Common Ground Sanctuary  
Congregation Bais Chabad/ West Bloomfield  
Congregation Beth Ahm

Congregation Beth Chabad  
Congregation Beth Shalom  
Congregation Beth Torah  
Congregation B'nai Israel  
Congregation B'nai Moshe  
Congregation Shaarey Zedek  
Congregation Shir Tikvah  
Congregation Zichron Yisroel  
Council of Orthodox Rabbis  
of Greater Detroit  
Cranbrook Educational Community  
Crohn's & Colitis Foundation  
of America Inc.  
Cystic Fibrosis Foundation  
David Horodoker Women's Organization  
Detroit Country Day School  
Detroit Institute of the Arts  
Detroit Medical Center  
Detroit Symphony Orchestra  
Detroit Zoological Society  
Doctors Without Borders USA  
Dogs for the Deaf  
The Dove Institute  
Epilepsy Foundation of Michigan  
Facing History and Ourselves National  
Foundation  
Focus Hope  
Food Bank Council of Michigan  
Food Bank of the Rockies  
Forgotten Harvest  
Franklin Village Council for  
the Visual and Performing Arts  
Free Press Charities  
Friends of Children's Oncology Camp

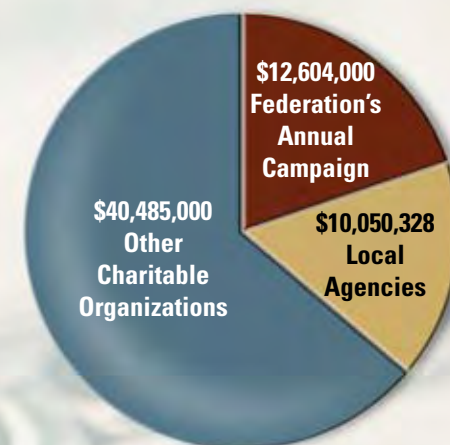


Friends of Refugees of Eastern Europe  
 Friends of Tel-Aviv Sourasky  
 Medical Center  
 Friends of Yemin Orde  
 Friendship Circle  
 Gary Burnstein Community Health Clinic  
 Gilda's Club of Metropolitan Detroit  
 Gleaners Community Food Bank  
 Great Lakes Chamber Music Festival  
 Greening of Detroit  
 Habitat for Humanity of Michigan  
 Hadassah – Greater Detroit Chapter  
 Henry Ford Health System  
 Holocaust Memorial Center  
 Hospice of Michigan  
 Israel 21c  
 Israel Children's Center  
 JARC  
 JESNA  
 Jewish Ensemble Theatre  
 Jewish Historical Society of Michigan  
 Jewish Hospice and Chaplaincy Network  
 Jewish Women's Foundation  
 Juvenile Diabetes Research Foundation  
 Kadima  
 Karmanos Cancer Institute  
 Kids Kicking Cancer  
 Kollel Institute of Greater Detroit  
 League of Women Voters  
 Leukemia and Lymphoma Society  
 Lubavitch Foundation  
 Lungevity Foundation  
 Machon L'Torah  
 Michigan Humane Society

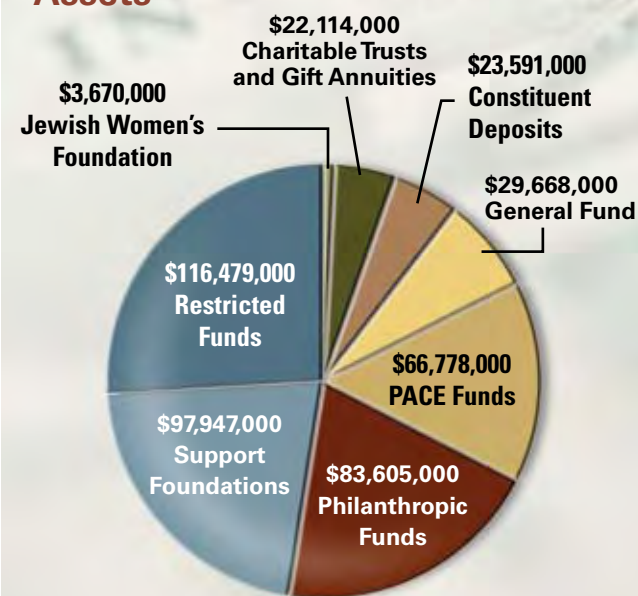
Michigan Opera Theatre  
 Michigan State University  
 Mikveh Israel  
 Multiple Myeloma  
 Research Foundation  
 National Council for  
 Synagogue Youth  
 National Council on Aging  
 National Multiple  
 Sclerosis Society of Michigan  
 Nature Conservancy  
 Oakland Family Services  
 Oak Park Area Arts Council  
 Old Newsboys Goodfellow  
 Fund of Detroit  
 Orchards Children's Services Inc.  
 Partnership with Children  
 PEF Israel Endowment Funds  
 Planned Parenthood of  
 Southeast Michigan  
 P'tach of Michigan  
 Ronald McDonald House  
 Rotary Club of Ann Arbor  
 North Foundation  
 Sacta-Rashi Foundation  
 Salvation Army of Detroit  
 Seeds of Peace  
 Sinai Hospital Guild  
 The Smile Train  
 Smithsonian Institution  
 Society for the  
 Advancement of Judaism  
 Susan G. Komen  
 Breast Cancer Foundation

Temple Beth El  
 Temple B'nai Israel  
 Temple Emanu-El  
 Temple Israel  
 Temple Kol Ami  
 Temple Shir Shalom  
 UCSF Foundation  
 United Way  
 University of Detroit Mercy  
 University of Michigan  
 Variety - The Children's Charity  
 WTVS/Channel 56  
 Walsh College  
 Wayne State University  
 Women's Leadership Fund  
 Yad Ezra  
 Young Israel of Oak Park  
 Young Israel of Southfield

## Endowment Fund Distributions



## Endowment Fund Assets



## Corporate & Foundation Support

Federation's Partners program connects corporations and foundations to the life-changing and life-saving programs supported by our community. We deeply appreciate their leadership, financial support and partnership in Federation's vital work.

### Platinum Partners (\$100,000 and above)



### Gold Partners (\$50,000 to \$99,999)



### Silver Partners (\$25,000 to \$49,999)



### DeRoy Testamentary Foundation



### Bronze Partners (\$15,000 to \$24,999)

Beaumont Hospital  
Fifth Third Bank  
Ford Motor Company Fund  
Henry Ford West Bloomfield Hospital  
H.W. Kaufman Financial Group/Burns & Wilcox  
Benard L. Maas Foundation  
The Sigmund & Sophie Rohlik Foundation  
The Suburban Collection

### Supporters

Deloitte  
DTE Energy Foundation  
Etkin Equities  
Honigman Miller Schwartz and Cohn LLP  
McGregor Fund  
Ben N. Teitel Charitable Trust,  
Gerald S. Cook, *Trustee*



## Board of Governors / Jewish Federation of Metropolitan Detroit



*Front row, l to r: Norman A. Pappas, Robert P. Aronson, Nancy Grosfeld  
Back row, l to r: Howard C. Neistein, Dorothy W. Benyas, Andrew M. Echt*

### FEDERATION OFFICERS

Nancy Grosfeld  
PRESIDENT

Michael P. Horowitz  
Dr. Richard Krugel  
Lawrence S. Lax  
Gary A. Shiffman  
Gary Torgow  
VICE PRESIDENTS

Ronald A. Klein  
TREASURER

Douglas A. Bloom  
SECRETARY

Florine Mark  
Marta Rosenthal  
Jane F. Sherman  
Paul R. Silverman  
AT-LARGE

Robert P. Aronson  
CHIEF EXECUTIVE OFFICER  
& EXECUTIVE SECRETARY

Dorothy W. Benyas  
CHIEF FINANCIAL OFFICER

Andrew Echt  
CHIEF FINANCIAL RESOURCE  
DEVELOPMENT OFFICER

Howard C. Neistein  
CHIEF ADMINISTRATIVE OFFICER

### EXECUTIVE COMMITTEE

Peter M. Alter  
CHAIR

Jonathan Aaron  
Karen Alpiner  
Eugene M. Applebaum  
Norman H. Beitner  
James Bellinson  
Debbie Berger  
Mandell L. Berman\*  
Frederick Blechman

Douglas A. Bloom  
Penny B. Blumenstein  
Ronald B. Charfoos  
Susie Citrin  
Hon. Avern L. Cohn\*  
Scott A. Eisenberg  
Michael Eizelman  
Irwin L. Elson  
Douglas M. Etkin  
Phillip Wm. Fisher  
Elyse Essick Foltyn

Dr. Conrad L. Giles\*  
Dr. Lynda Giles  
Paula Glazier  
James Grosfeld  
Nancy Grosfeld  
Mark R. Hauser  
Nancy Heinrich  
Doreen Hermelin\*  
Michael P. Horowitz  
Lawrence S. Jackier  
Linda Z. Klein

\*Life Member

Ronald A. Klein	Peter M. Alter	Phillip Wm. Fisher	James Hooberman	Mark C. Milgrom	Brian D. Siegel
Dr. Richard Krugel	Irwin M. Alterman	David Foltyn	Barbara Horowitz	Mark Nadel	Jennifer C. Silverman
Lawrence S. Lax	Eugene M. Applebaum	Elyse Essick Foltyn	Michael P. Horowitz	Robert H. Naftaly*	Paul R. Silverman
Matthew B. Lester	James M. August	Nathan Forbes	Arthur Horwitz	Lea Narens	Erwin S. Simon*
Lisa I. Lis	Michael J. Banks	Francee Ford	Edythe Jackier*	Larry M. Nemer	Rabbi Arnie Sleutelberg
Beverly Liss	Nora Lee Barron	Stanley Frankel*	Lawrence S. Jackier*	Terry Nosan	Gary Snyder
Florine Mark	Norman Beitner	Jennifer L. Friedman	John E. Jacobs	Joshua F. Opperer	Mindy Soble
Dr. John D. Marx	James Bellinson	Lori Garon	David Jacobson	Robert H. Orley	Ronald A. Sollish
Robert H. Naftaly*	Debbie Berger	Daniel Gilbert	Nancy Jacobson	David K. Page	Michael L. Stein
Larry M. Nemer	James Berger	Dr. Conrad L. Giles	Nancy Glass Kanat	Norman A. Pappas	Sheldon D. Stern
Terry Nosan	Michael E. Berger	Dr. Lynda Giles	David Katzman	Susie Pappas	Rabbi Daniel B. Syme
Robert H. Orley	Mandell L. Berman*	Paula Glazier	Brian E. Kepes	Patrice M. Phillips	Joel D. Tauber*
David K. Page*	Maurice Beznos	Gayle Friedman Gold	Diane Klein	Jack A. Robinson*	Laurence S. Tisdale
Norman A. Pappas	Roselyn K. Blanck	Steven Goodman	Emery I. Klein	Dulcie B. Rosenfeld*	Gary Torgow
Susie Pappas	Frederick Blechman	David Gorosh	(Honorary Member)	Benjamin F. Rosenthal	Brad Urdan
Benjamin F. Rosenthal	Douglas A. Bloom	Nancy J. Grand	Linda Z. Klein	Marta Rosenthal	Sheri L. Wagner
Marta Rosenthal	Harold Blumenstein	Stephen Grand	Ronald A. Klein	Lowell Salesin	Marc Weinbaum
Brian Y. Satovsky	Penny B. Blumenstein*	(Honorary Member)	Mark Kowalsky	Brian Y. Satovsky	Stewart C. Weiner
Amy Carson Schlusssel	Dr. Marc A. Borovoy	Irwin Green*	Rabbi Joseph Krakoff	Amy Carson Schlusssel	Dr. Saul I. Weingarden
Jeffrey B. Schlusssel	Howard Brown	Carolyn Greenberg*	Dr. Henry Kroll	Jeffrey B. Schlusssel	Hon. Helene N. White
Mark E. Schlusssel*	Ronald B. Charfoos	Hugh W. Greenberg*	Dr. Richard Krugel	Mark E. Schlusssel*	Trudi Wineman
Alan E. Schwartz*	Susan Citrin	James Grosfeld	Ellen S. Labes	Nancy Schostak	Lorne B. Zalesin
Jane F. Sherman	Hon. Avern L. Cohn*	Nancy Grosfeld	(Honorary Member)	Robert I. Schostak	George M. Zeltzer*
Gary A. Shiffman	Robert S. Colburn	Cheryl Guyer	Donald M. Lansky	Judith Schram	Jason Zimmerman
Paul R. Silverman	Lauren Daitch	Dr. Dan G. Guyer	Lawrence S. Lax	Alan E. Schwartz*	
Michael L. Stein	Marvin I. Danto	Jerome Y. Halperin	Terran Leemis	Alan S. Schwartz	*Life Member
Joel D. Tauber*	Sandy Danto	(Honorary Member)	Matthew B. Lester	Merle S. Schwartz	<b>FEDERATION</b>
Gary Torgow	William Davidson*	David Handleman	Sharon B. Lipton	Ronald A. Schwartz	<b>NOMINATING</b>
Brad Urdan	Dennis B. Deutsch	Sharon Hart	Lisa I. Lis	Sandra R. Schwartz	<b>COMMITTEE</b>
Sheri L. Wagner	Leo S. Eisenberg	Mark R. Hauser	Beverly Liss	Lois Shaevisky	Lawrence S. Lax
George M. Zeltzer*	Scott A. Eisenberg	Nancy Heinrich	Michael W. Maddin*	Robert S. Sher	CHAIR
<b>JFMD BOARD MEMBERS</b>	Michael J. Eizelman	Brian Hermelin	Florine Mark	Abbe Sherbin	Jennifer L. Friedman
Jonathan Aaron	Irwin L. Elson	Doreen Hermelin*	Dr. John D. Marx	Eugene S. Sherizen	Nancy Heinrich
Patrice Aaron	William Farber	Robert S. Hertzberg	Todd Mendel	Jane F. Sherman*	David Jacobson
Karen Alpiner	Kathleen Wilson Fink	Stuart E. Hertzberg	Jill Menuck	Gary A. Shiffman	Matthew B. Lester
					Susie Pappas

\*Life Member

**FEDERATION  
NOMINATING  
COMMITTEE**

Lawrence S. Lax  
CHAIR  
Jennifer L. Friedman  
Nancy Heinrich  
David Jacobson  
Matthew B. Lester  
Susie Pappas



## Board of Directors / United Jewish Foundation of Metropolitan Detroit

### UJF OFFICERS

Norman A. Pappas  
PRESIDENT

Douglas M. Etkin  
Phillip Wm. Fisher  
Michael B. Perlman  
Todd Sachse

Paul M. Zlotoff  
VICE PRESIDENTS

Jeffrey M. Davidson  
TREASURER

Robert P. Aronson  
CHIEF EXECUTIVE OFFICER  
& EXECUTIVE SECRETARY

Dorothy W. Benyas  
CHIEF FINANCIAL OFFICER

Andrew Echt  
CHIEF FINANCIAL RESOURCE  
DEVELOPMENT OFFICER

Howard C. Neistein  
CHIEF ADMINISTRATIVE OFFICER

### UJF BOARD MEMBERS

Jonathan Aaron  
Mark Adler  
Karen Alpiner  
Peter M. Alter  
Eugene M. Applebaum  
Linda W. Aviv  
Norman H. Beitner  
James Bellinson  
Debbie Berger  
Mandell L. Berman  
Frederick Blechman  
Douglas A. Bloom  
Penny B. Blumenstein  
Harvey Bronstein  
Ronald B. Charfoos  
Hon. Avern L. Cohn  
Jeffrey M. Davidson  
Michael J. Eizelman  
Irwin L. Elson  
Douglas M. Etkin  
Phillip Wm. Fisher  
Elyse Essick Foltyn  
Dr. Conrad L. Giles

Paula Glazier  
Irwin Green\*  
James Grosfeld  
Nancy Grosfeld  
Margot Halperin  
Mark R. Hauser\*  
Nancy Heinrich  
Doreen Hermelin  
Michael P. Horowitz  
Lawrence S. Jackier  
Bernard S. Kent  
Robert B. Kleiman  
Linda Z. Klein  
Ronald A. Klein  
Dr. Richard Krugel  
Lawrence S. Lax  
Matthew B. Lester  
Hannan Lis  
Lisa I. Lis  
Beverly Liss  
Michael W. Maddin\*  
Florine Mark  
Dr. John D. Marx  
Edward Meer

Allan Nachman  
Robert H. Naftaly  
Larry Nemer  
Patti Nemer  
Terry Nosan  
Graham A. Orley\*  
Randall C. Orley  
Robert H. Orley  
David K. Page  
Norman A. Pappas  
Susie Pappas  
Diane B. Perlman  
Michael B. Perlman  
Jack A. Robinson\*  
Warren E. Rose  
Benjamin F. Rosenthal  
Marta Rosenthal  
Todd Sachse  
Neil A. Satovsky  
Mark E. Schlussel  
David W. Schostak  
Alan E. Schwartz  
Jane F. Sherman  
Gary A. Shiffman

Susie Sills  
Paul R. Silverman  
Erwin S. Simon\*  
Robert Slatkin\*  
Michael L. Stein  
Jeffrey P. Straus  
Joel D. Tauber  
Gary Torgow  
Brad Urdan  
Steven I. Victor  
Steven Weisberg  
George M. Zeltzer  
Paul M. Zlotoff

\*Life Member

### FOUNDATION NOMINATING COMMITTEE

Mark R. Hauser  
CHAIR  
Jeffrey M. Davidson  
Diane B. Perlman  
Todd Sachse

## Women's Department / Young Adult Division

### WOMEN'S DEPARTMENT LEADERSHIP

Susie Pappas  
PRESIDENT  
Susie Citrin  
CAMPAIGN VICE PRESIDENT  
Marcie Orley  
ASSOCIATE CAMPAIGN CHAIR

Joan Chernoff Epstein  
Jodi Goodman  
Leah Ann Kleinfeldt  
Amy Carson Schlussel  
EDUCATION VICE PRESIDENTS

Pam Lippitt  
CORRESPONDING SECRETARY  
Mindy Soble  
RECORDING SECRETARY

### YOUNG ADULT DIVISION (YAD) LEADERSHIP

Brad "Bubba" Urdan  
PRESIDENT  
Jill Menuck  
PRESIDENT-ELECT

Jeremy Crane  
Lauren Friedman Kerman  
David Kramer  
David Gorosh  
Jordan Glass  
OFFICERS

## Lifetime of Giving to Federation's Annual Campaign

### \$36 Million

Max M. & Marjorie S. Fisher

### \$18 Million

William Davidson

Sam & Evelyn Grand,

Stephen & Nancy Grand

Edward & Lillian Rose,

Irving & Audrey Rose,

Leslie & Marjorie Rose,

Sheldon S. & Joan Rose

Mr. & Mrs. A. Alfred Taubman

### \$10 Million

Eugene & Marcia Applebaum

Mandell L. & Madeleine H. Berman\*

Jerry & Eileen Bielfield\*

Irwin & Bethea Green

David & Marion Handleman

Pauline & Edward C. Levy,

Julie & Edward C. Levy Jr.,

Joshua & Eunice Stone

Joel D. & Shelley Tauber

### \$5 Million

Sol & Ann Eisenberg,

Kenneth & Frances Eisenberg

The Cohn & Haddow Families

Jean & Samuel Frankel

Daniel & Jennifer Gilbert\*

Nancy & James Grosfeld

Mr. & Mrs. Samuel Hamburger,

Mr. & Mrs. Louis Hamburger

Jason L. & Edith Honigman,

Daniel M. Honigman

Jay M. Kogan

David S. & Miriam Mondry

George & Celia Orley,

Joseph H. & Suzanne Orley,

Graham A. & Sally Orley

Meyer & Anna Prentis,

Lester J. & Jewell Prentis Morris Family,

Beverly P. Wagner\*

Edward Ravitz\*

Rebecca & Gary Sakwa

The Schostak Family

The Milton & Lois Shiffman Family\*

### \$3 Million

Mr. & Mrs. Louis Berry,

Mr. & Mrs. Harold Berry,

Mr. & Mrs. George D. Seyburn

Penny B. & Harold Blumenstein

Abraham & Molly Borman,

Paul & Marlene Borman

Tom & Sarah Borman, Paul D. Borman

Margot & Warren J. Coville

Betty & Marvin Danto

Madeline & Sidney Forbes

Byron & Dorothy Gerson

Doreen & Ambassador David B. Hermelin

The Jacob Family

Mr. & Mrs. Maxwell Jospey

David M. & Bernice Miro,

Jeffrey H. & Marsha Miro,

Ernest J. & Barbara Weiner

The Must Family\*

Sheila & Hughes Potiker

Marianne & Alan E. Schwartz

The Seligman Family

Jane F. & D. Larry Sherman

Max & Frieda Stollman,

Phillip Stollman

Marilyn & Walter J. Wolpin

Robert & Sylvia Zell

Paul & Helen Zuckerman

*\*new to this giving level since 2007 Annual Report*



## Builders of Israel

Established in 1997 to honor those whose cumulative gifts of \$1 million and more to Federation's Annual Campaign have helped create the State of Israel and furthered the rescue, rehabilitation and education of millions of Jewish people in our community and around the world.

Eugene & Marcia Applebaum  
Mina & Theodore Bargman  
Nora Lee & Guy Barron  
Mandell L. &  
Madeleine H. Berman  
Mr. & Mrs. Harold Berry  
Mr. & Mrs. Louis Berry  
Beznos Family  
Jerry & Eileen Bielfield  
Penny B. & Harold Blumenstein  
Paul & Marlene Borman  
Abraham & Molly Borman  
Paul D. Borman  
Tom & Sarah Borman  
Dorothy & Peter D. Brown  
Margo & Maurice S. Cohen  
Sadie & Irwin I. Cohn  
Lois & Hon. Avern L. Cohn  
Margot & Warren J. Coville  
Julie & Peter Cummings  
Betty & Marvin I. Danto  
William Davidson  
Alfred L. & Bernice Deutsch  
Gail & Kenneth A. Dishell  
Mala & Henry S. Dorfman  
Linda & Milton H. Dresner  
Sol & Ann Eisenberg  
Kenneth & Frances Eisenberg  
Estelle & Philip L. Elkus  
Markus M. Ernst\*  
Audrey & William Farber  
Andy & Amy Farbman\*

Burt & Suzy Farbman\*  
David & Nadine Farbman\*  
Dede & Oscar H. Feldman  
Morris & Sybil Fenkell  
Ron & Ronda Ferber/  
Alon & Shari Kaufman  
Clothilde & Leon Fill  
Phillip Wm. Fisher  
Max M. & Marjorie S. Fisher  
Mr. & Mrs. Meyer M. Fishman  
Nathan & Minnie Fishman  
Madeline & Sidney Forbes  
Mr. & Mrs. Henry Ford II  
Jean & Samuel Frankel  
Stanley & Judy Frankel  
Barbara & Marvin Frenkel  
Isabelle & Samuel E. Friedman  
Byron & Dorothy Gerson  
Daniel & Jennifer Gilbert  
Gloria & William Gilbert  
Dawn & Milt Gilman  
Mr. & Mrs. Yale Ginsburg\*  
Constance & Irving L. Goldman  
Nola & Marvin H. Goldman  
Sam & Evelyn Grand  
Stephen & Nancy Grand  
Irwin & Bethea Green  
Carolyn & Hugh W. Greenberg  
Nancy & James Grosfeld  
Rita & John M. Haddow  
Mr. & Mrs. Louis Hamburger  
Mr. & Mrs. Samuel Hamburger

David & Marion Handleman  
Sonia & Paul M. Handleman  
Shirley & Merle Harris  
Doreen & Ambassador  
David B. Hermelin  
Daniel M. Honigman  
Jason L. & Edith Honigman  
Stanley Imerman  
Joseph H. & Edythe Jackier  
The Jacob Family  
Nancy & Joseph M. Jacobson  
Mr. & Mrs. Maxwell Jospey  
Ann & Norman Katz  
David Katzman  
Beatrice & Barney L. Keywell  
Jay M. Kogan  
Pauline & Edward C. Levy  
Julie & Edward C. Levy Jr.  
Susan & A. Bart Lewis  
Beth & Malcolm Lowenstein  
Florine Mark and Family  
Florence & Charles Milan  
Philip S. & Edna Minkin  
David M. & Bernice Miro  
Jeffrey H. & Marsha Miro  
David S. & Miriam Mondry  
Sheila & Eugene Mondry  
Lester J. & Jewell Morris  
Mike & Mary Must  
Edward & Judith Narens  
Ann & Rudy Newman  
Barbara & Irving Nusbaum

Graham A. & Sally Orley  
Joseph H. & Suzanne Orley  
Andrea & David K. Page  
Susan & Norman A. Pappas  
Myrna & Spencer Partrich  
Marilyn & Bernard E. Pincus  
Ina & Murray Pitt  
Blanche & David Pollack  
Sheila & Hughes Potiker  
Meyer & Anna Prentis  
Edward Ravitz  
Aviva & Jack A. Robinson  
Edward & Lillian Rose  
Irving & Audrey Rose  
Leslie & Marjorie Rose  
Joan & Sheldon Rose  
Mr. & Mrs. Meyer Rosenbaum  
Mr. & Mrs. Melvin B. Rosenhaus  
Victor & Alice Ross  
Irving A. Rubin  
Rebecca & Gary Sakwa  
Robert V. & Bluma Schechter  
Shirley & Nathan Schlafer  
The Schostak Family  
Marianne & Alan E. Schwartz  
The Seligman Family  
Mr. & Mrs. George D. Seyburn  
Sam & Nancy Shamie and Family\*  
Laurie & Joel H. Shapiro  
Jane F. & D. Larry Sherman  
Mr. & Mrs. Abe Shiffman  
Milton & Lois Shiffman

Edith & Joseph B. Slatkin  
Richard & Sheila Sloan  
Mr. & Mrs. Harold Soble  
Susan & Robert Sosnick  
Arlene & Jerome Spero\*  
Henry J. Spiro  
Michael Stein  
Max & Frieda Stollman  
Phillip Stollman  
Joshua & Eunice Stone  
Joel D. & Shelley Tauber  
Mr. & Mrs. A. Alfred Taubman  
Steven I. & Arlene Victor  
Beverly P. Wagner  
Ernest J. & Barbara Weiner  
Janis & William M. Wetsman  
Marilyn & Walter J. Wolpin  
Roberta & Sylvia Zell  
Paul & Helen Zuckerman

*\*new to this giving level  
since 2007 Annual Report*

## Staff / Jewish Federation of Metropolitan Detroit

**Charles Aaron**  
Orthodox Youth Outreach Coordinator  
Alliance for Jewish Education

**Jan Adamczyk**  
Executive Administrative Assistant  
Executive Office

**Bruce Agababian**  
Graphic Artist  
Marketing & Communications

**Sharon Alterman**  
Director, Leonard N. Simons  
Jewish Community Archives  
Marketing & Communications

**Gina Andrisani**  
Executive Administrative Assistant  
Executive Office

**Charlene Arm**  
Director  
Human Resources

**Robert P. Aronson**  
Chief Executive Officer  
Executive Office

**Shoshana Baruch**  
Administrative Assistant  
Jewish Community Endowment Fund

**Michael D. Benghiat**  
Associate Director  
Community Campaign  
Campaign & Community Development

**Karen Benner**  
Graphic Artist  
Marketing & Communications

**Dorothy W. Benyas**  
Chief Financial Officer  
Executive Office

**Pamela Bingham**  
Senior Accountant  
Finance

**Marianne Milgrom Bloomberg**  
Director  
Mission Outreach & Development  
Financial Resource Development  
Israel & Overseas Services

**Linda J. Blumberg**  
Director  
Planning & Agency Relations

**Iris J. Borders**  
Switchboard Operator  
Property Management

**Yehudis Brea**  
Production Manager  
Marketing & Communications

**Tova Britvan**  
Administrative Assistant  
Alliance for Jewish Education

**Marion Bronstein**  
Staff Associate  
Alliance for Jewish Education

**Lisa Naftaly Brown**  
Associate Director  
Jewish Women's Foundation

**C. Patricia Cousins**  
Building Manager  
Property Management

**Stacey A. Crane**  
Director  
Jewish Community Endowment Fund

**Lawrence Cuneaz**  
Assistant Pressperson  
Marketing & Communications

**Lisa Cutler**  
Director  
Campaign & Community Development

**Lori Davidson-Mertz**  
Israel & Overseas Associate  
Israel & Overseas Services

**Marjorie W. Davis**  
Administrative Assistant  
Jewish Community Endowment Fund

**Howard N. Dembs**  
Director  
Marketing & Communications

**Andreea Dinca**  
Senior Accountant  
Finance

**Elizabeth Doppelt**  
Jewish Educator, Shalom Street  
Alliance for Jewish Education

**Tova R. Dorfman**  
Director, Israel  
Israel & Overseas Services

**Andrew M. Eght**  
Chief Financial Resource  
Development Officer  
Executive Office

**Dereck D. Evans**  
Maintenance Supervisor  
Property Management

**Lisa Federico**  
Senior Accountant  
Finance

**Susan G. Feldman**  
Senior Endowment  
Development Manager  
Jewish Community Endowment Fund

**Charles Ferguson**  
Maintenance  
Property Management

**Haviva Ferrier**  
Administrative Assistant  
Alliance for Jewish Education

**Marina Flomina**  
Staff Accountant  
Finance

**Harold Folkoff**  
Assistant  
Alliance for Jewish Education

**Delois W. Fralin**  
Administrative Assistant  
Jewish Community Endowment Fund

**Marion S. Freedman**  
Director  
Women's Department

**Carla Gaines**  
Mail Room Coordinator  
Marketing & Communications

**Daniel Ginis**  
Major Gifts Director  
Financial Resource Development

**Martha Goldberg**  
Community Development Associate  
Campaign & Community Development

**Esther M. Gomez**  
Administrative Assistant  
Human Resources

**Jessica Goodwin**  
Staff Associate  
Campaign & Community Development

**Daniel B. Greenberg**  
Senior Endowment Development  
Manager  
Jewish Community Endowment Fund

**Gail Greenberg**  
Senior Staff Associate  
Alliance for Jewish Education

**Jennifer Noparstak Greenhill**  
Senior Staff Associate  
Women's Department

**Debra M. Grossman**  
Administrative Assistant  
Campaign & Community Development

**John Hardwick**  
Web Manager  
Marketing & Communications /  
Information Technology

**Toni Hayes Howard**  
Administrative Assistant  
Women's Department

**David Henig**  
Administrative Assistant  
Board of Rabbis  
Alliance for Jewish Education

**Bernice Herd**  
Office Manager  
Campaign & Community Development

**Susan Herman**  
Director, Michigan Jewish Conference  
Planning & Agency Relations

**Susan M. Higgins**  
Executive Assistant to  
Chief Executive Officer  
Executive Office

**Mychelle L. Holland**  
Staff Associate  
Finance

**Linda R. Hummel**  
Administrative Assistant  
Finance / Planning & Agency Relations

**Judah Isaacs**  
Director  
Alliance for Jewish Education

**Cherron V. Jackson**  
Secretary  
Israel & Overseas Services

**Susan Cassels Kamin**  
Director, Special Projects & Events  
Executive Office

**Helen Foa Katz**  
Director  
Jewish Women's Foundation



**Scott Kaufman**  
Director  
Family Mission & Israel at 60  
Israel & Overseas Services

**Steven Kaufman**  
Director  
Community Wide Security

**Harry Kirsbaum**  
Associate Director, Editorial  
Marketing & Communications

**Renee A. Klish**  
Systems Database Analyst  
Information Technology

**Eugene Knotts**  
Maintenance  
Property Management

**Helene Weiss Kohn**  
Program Assistant, Special Education  
Alliance for Jewish Education

**Linda Lambropoulos**  
Senior Accountant  
Finance

**Randy A. LeCompte**  
Director  
Property Management

**Harvey M. Leven**  
Associate Director  
Professional Development  
Alliance for Jewish Education

**Jennifer Levine**  
Director, Young Adult Division  
Campaign & Community Development

**Lori E. Lieberman**  
Senior Accountant  
Finance

**Cheryl A. Lingsch**  
Israel & Overseas Analyst  
Israel & Overseas Services

**Judy S. Loeb**  
Associate Director, FedEd  
Alliance for Jewish Education

**Jonathan D. Lowe**  
Associate Director  
Jewish Community Endowment Fund

**Linda J. Lutz**  
Finance Director  
Finance

**Norman C. Lyle**  
Associate Director, Graphic Services  
Marketing & Communications

**Ellen Maiseloff**  
Associate Director, Special Education  
Alliance for Jewish Education

**Beth Margolin**  
Teen Mission Coordinator  
Israel & Overseas Services

**Patricia L. Mayer**  
Administrative Assistant  
Planning & Agency Relations

**Maxine J. McGlennen**  
Benefits Manager  
Human Resources

**Kathryn I. McGlone**  
Administrative Assistant  
Campaign & Community Development

**Marcy Millman**  
Accounting Administrative Assistant  
Finance

**Marilyn J. Morris**  
Administrative Assistant  
Campaign & Community Development

**Lauren E. Morton**  
Staff Associate  
Alliance for Jewish Education

**Sarah Kruman Mountain**  
Staff Associate  
Alliance for Jewish Education

**Amy Neistein**  
Director, Detroit  
Israel & Overseas Services

**Howard C. Neistein**  
Chief Administrative Officer  
Executive Office

**Ruthanne Pearlman**  
Graphic Artist  
Marketing & Communications

**Margo Pernick**  
Executive Director  
The Jewish Fund

**Devorah Erlich Rich**  
Senior Planning Associate  
Planning & Agency Relations

**Mark J. Ridky**  
System Support Analyst  
Information Technology

**Tracy L. Robinson**  
Mail Room Assistant  
Marketing & Communications

**Naomi Rockowitz**  
Project Coordinator, Israel Office  
Israel & Overseas Services

**Jeri S. Rope**  
Data Entry Specialist  
Information Technology

**Debra B. Rosenberg**  
Senior Staff Associate  
Alliance for Jewish Education

**Dale Alpert Rubin**  
Associate Director  
Alliance for Jewish Education

**Wendy Sadler**  
Director, Shalom Street  
Alliance for Jewish Education

**Joseph Selesny**  
Associate Director  
Financial Resource Development

**Shira Shapiro**  
Senior Planning Associate  
Planning & Agency Relations

**Dedra Simmons**  
Administrative Assistant  
Alliance for Jewish Education

**Neldeson A. Simpson**  
Pressperson  
Marketing & Communications

**Debby Sims**  
Administrative Assistant  
Campaign & Community Development /  
Women's Department

**Yvette Smith**  
Staff Accountant  
Finance

**Lisa Soble Siegmann**  
Associate Director  
JEFF & Informal Education  
Alliance for Jewish Education

**Sharon A. Spilkin**  
Finance Director  
Finance

**Rebecca J. Stasch**  
Associate Director  
Finance

**Jeffrey Surowitz**  
Statewide Jewish Outreach Coordinator  
Alliance for Jewish Education

**Julie Zuckerman Tepperman**  
Director, Leadership Development  
Financial Resource Development

**Silhouetta Williams**  
Accounting Clerk  
Finance

**Joseph Zammita**  
Director  
Information Technology

**Mike G. Zoltek**  
Network Manager  
Information Technology

As of September 11, 2008